



Corzan® CPVC (Chlorinated Polyvinyl Chloride) Schedule 80 has a higher temperature range and in general, greater chemical resistance than PVC.

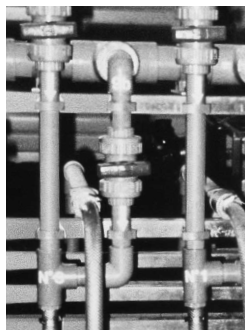
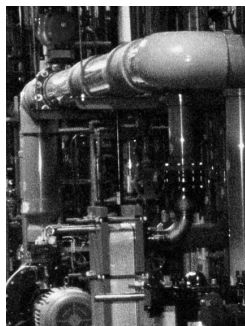
It is an excellent material for hot corrosive liquids and hot and cold water applications.



CUSTOMER SERVICE
Michigan (800) 374 0234
Florida (800) 432 6224
www.colonialengineering.com



About Corzan® CPVC



PROVEN PERFORMANCE IN INDUSTRY AFTER INDUSTRY

The excellent corrosion resistance, mechanical strength and competitive economics of BFGoodrich CPVC technology have been utilized in a variety of process industries for over 30 years. When resistance to strong mineral acids, bases or water handling is required, Corzan is the ideal choice.

DESIGNED FOR INDUSTRY

Developed in 1958 by BFGoodrich, post-chlorinated polyvinyl chloride, or CPVC, has been offering the process industry superior corrosion resistance, mechanical strength and excellent life-cycle economics in a single package. Today, as Corzan CPVC, this same BFGoodrich material provides industry with longer service life, lower maintenance and improved process utilization compared to traditional materials. Corzan CPVC is industry's material of choice because it's a cost-effective material that will resist corrosion while also providing mechanical strength and safety performance.

PROVIDING THE CORROSION-RESISTANT CHOICE

Many chemicals encountered in the process industry aggressively corrode most metal equipment, resulting in process leaks, flow restrictions and ultimately premature failure. Corzan CPVC is not subject to galvanic corrosion and is chemically inert to most mineral acids, bases and salts, as well as aliphatic hydrocarbons. As a result, Corzan CPVC can replace traditional materials in many applications and provide longer service life, lower maintenance costs and help ensure environmental compliance. Of course, actual performance of any material depends on specific service conditions. BFGoodrich has tested Corzan CPVC with hundreds of chemicals at various temperatures, stress levels and other process conditions to assure material performance in many common process applications.

MEETING MECHANICAL STRENGTH REQUIREMENTS

When non-metals replace metals in process applications for corrosion reasons, the mechanical strength of the system becomes a key design consideration. In order to ensure safe and reliable operation, non-metals must provide sufficient mechanical strength to meet design criteria such as:

- Maximum operating pressure
- Strength at elevated temperatures
- Equipment service life
- Structural integrity

Many non-metals do not have the tensile strength to meet the pressure requirements of process applications, especially at elevated temperatures. However, according to BFGoodrich technical bulletins, Corzan piping systems provide adequate tensile strength for operation up to 200°F (93°C) and can be expected to maintain their pressure-bearing capabilities for 50 years and beyond.



Corzan® is a registered trademark of the BFGoodrich Company.



METAL TREATING

The many different treatment methods and wide selection of metals involved require the use of very aggressive acids and bases at high temperatures. Concentrations up to 40% chromic acid or 95% sulfuric acid are not uncommon in the industry, with temperatures sometimes reaching 200°F (93°C). Whether it's etching, anodizing, pickling or plating, the performance and versatility of Corzan in these process conditions make it the ideal choice in this industry.



Aircraft Maintenance — Georgia



Lithographic Plate Manufacturing — Colorado

INDUSTRIAL WASTE TREATMENT

Most industrial waste streams consist of corrosive chemicals that can vary widely in concentration and temperature. Here, the versatility of Corzan is ideally suited to provide reliable operation in a variety of process conditions. With the environmental regulations on industrial waste handling becoming more stringent, Corzan offers a cost-effective solution to help ensure environmental compliance.



FOOD AND BEVERAGE

Many food and beverage plants require meticulous cleaning in order to meet health standards. In order to clean process equipment thoroughly, high temperatures and harsh chemicals or cleaning agents are often necessary. These conditions can corrode most metals, while many plastics will not tolerate the temperature extremes. Corzan will perform well in such situations and is an economic alternative to traditional materials.

PULP AND PAPER

Pulp mills use a variety of corrosive chemicals in the bleaching and pulp processing steps. Chemicals such as chlorine dioxide, sodium hypochlorite, sulfuric acid, and the various pulp liquors generally attack carbon and stainless steels, significantly limiting service life. With many mills beginning to focus more on cost competitiveness, the life-cycle cost benefits of Corzan are well suited to meet the demands of this industry.

CHEMICAL PROCESSING

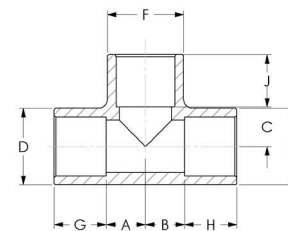
The chemical processing industry includes a wide variety of applications, many of which require excellent corrosion resistance and mechanical strength. Corzan can be specified when outstanding performance is required over a broadrange of chemicals, concentrations and room temperatures, particularly when acids and bases are encountered.



Bottle Sterilization — Europe

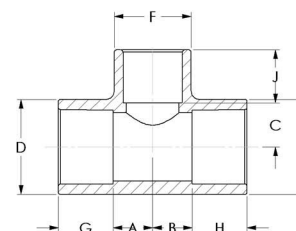


TEE
All Soc



UNIV.#	PART#	SIZE	A	B	C	D	E	F	G	H	J
1801-005	H07120	1/2	9/16	9/16	9/16	1-9/32	1-9/32	1-9/32	1-1/16	1-1/16	1-1/16
1801-007	H08120	3/4	19/32	19/32	19/32	1-17/32	1-17/32	1-17/32	1-1/8	1-1/8	1-1/8
1801-010	H10120	1	3/4	3/4	3/4	1-27/32	1-27/32	1-27/32	1-5/16	1-5/16	1-5/16
1801-012	H14120	1-1/4	29/32	29/32	29/32	2-7/32	2-7/32	2-7/32	1-13/32	1-13/32	1-13/32
1801-015	H17120	1-1/2	1-1/16	1-1/16	1-1/16	2-1/2	2-1/2	2-1/2	1-21/32	1-21/32	1-21/32
1801-020	H20120	2	1-7/32	1-7/32	1-7/32	3	3	3	1-3/4	1-3/4	1-3/4
1801-025	H27120	2-1/2	1-17/32	1-17/32	1-17/32	3-9/16	3-9/16	3-9/16	2-7/32	2-7/32	2-7/32
1801-030	H30120	3	1-7/8	1-7/8	1-7/8	4-7/32	4-7/32	4-7/32	1-15/16	1-15/16	1-15/16
1801-040	H40120	4	2-3/8	2-3/8	2-3/8	5-7/16	5-7/16	5-7/16	2-1/2	2-1/2	2-1/2
1801-060	H60120	6	3-9/16	3-9/16	3-9/16	7-19/32	7-19/32	7-19/32	3-1/16	3-1/16	3-1/16
1801-080	H80120	8	4-15/32	4-15/32	4-15/32	9-23/32	9-23/32	9-23/32	4-1/32	4-1/32	4-1/32
1801-100	H100120	10	5-3/4	5-3/4	5-3/4	12-1/16	12-1/16	12-1/16	5-1/2	5-1/2	5-1/2
1801-120	H120120	12	6-15/16	6-15/16	6-15/16	14-1/4	14-1/4	14-1/4	6-1/2	6-1/2	6-1/2

TEE
Soc x Soc x Reducing Soc

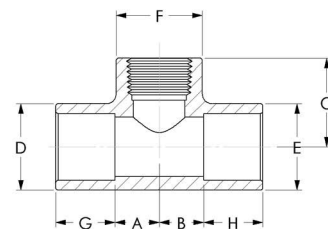


UNIV.#	PART#	SIZE	A	B	C	D	E	F	G	H	J
1801-101	H08122	3/4 x 3/4 x 1/2	9/16	9/16	5/8	1-1/2	1-1/2	1-7/32	1-1/16	1-1/16	29/32
1801-130	H10122	1 x 1 x 1/2	19/32	19/32	13/16	1-27/32	1-27/32	1-3/16	1-1/8	1-1/8	29/32
1801-131	H10124	1 x 1 x 3/4	11/16	11/16	27/32	1-27/32	1-27/32	1-13/32	1-5/32	1-5/32	1-1/32
1801-210	H17124	1-1/2 x 1-1/2 x 3/4	11/16	11/16	1	2-5/16	2-5/16	1-3/8	1-3/8	1-3/8	1
1801-211	H17126	1-1/2 x 1-1/2 x 1	29/32	29/32	1-5/32	2-11/32	2-11/32	1-23/32	1-3/8	1-3/8	1-1/8
1801-247	H20122	2 x 2 x 1/2	17/32	17/32	1-9/32	2-29/32	2-29/32	1-7/32	1-17/32	1-17/32	29/32
1801-248	H20124	2 x 2 x 3/4	19/32	19/32	1-9/32	2-29/32	2-29/32	1-7/16	1-17/32	1-17/32	1-1/32
1801-249	H20126	2 x 2 x 1	23/32	23/32	1-9/32	2-29/32	2-29/32	1-13/16	1-17/32	1-17/32	1-5/32
1801-251	H20130	2 x 2 x 1-1/2	1-1/32	1-1/32	1-9/32	2-29/32	2-29/32	2-1/2	1-17/32	1-17/32	1-13/32
1801-338	H30130	3 x 3 x 2	1-5/16	1-5/16	1-7/8	4-7/32	4-7/32	3-1/32	1-15/16	1-15/16	1-17/32
1801-420	H40130	4 x 4 x 2	1-5/16	1-5/16	2-5/16	5-5/16	5-5/16	3-1/32	2-5/16	2-5/16	1-17/32
1801-422	H40130	4 x 4 x 3	1-13/16	1-13/16	2-9/32	5-5/16	5-5/16	4-7/32	2-5/16	2-5/16	1-15/16
1801-532	H60138	6 x 6 x 4	2-3/8	2-3/8	3-9/32	7-9/16	7-9/16	5-1/4	3-3/32	3-3/32	2-5/16
1801-585	H80138	8 x 8 x 6	3-3/4	3-3/4	4-3/16	9-11/16	9-11/16	7-17/32	4-1/32	4-1/32	3-1/32



TEE

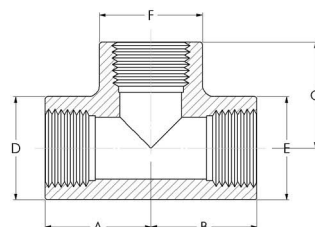
Soc x Soc x FPT



UNIV.#	PART#	SIZE	A	B	C	D	E	F	G	H	J
1802-005	H07183	1/2	9/16	9/16	2-1/4	1-9/32	1-9/32	1-9/32	1-1/16	1-1/16	None
1802-007	H08185	3/4	5/8	5/8	2-7/16	1-17/32	1-17/32	1-17/32	1-1/8	1-1/8	None
1802-010	H10187	1	3/4	3/4	2-31/32	1-27/32	1-27/32	1-27/32	1-5/16	1-5/16	None
1802-012	H14189	1-1/4	15/16	15/16	3-7/16	2-7/32	2-7/32	2-7/32	1-13/32	1-13/32	None
1802-015	H17191	1-1/2	1	1	3-15/16	2-1/2	2-1/2	2-1/2	1-21/32	1-21/32	None
1802-020	H20193	2	1-5/16	1-5/16	4-1/2	3	3	3	1-25/32	1-25/32	None

TEE

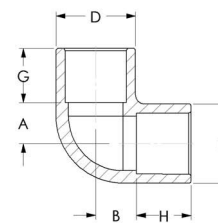
All FPT



UNIV.#	PART#	SIZE	A	B	C	D	E	F	G	H	J
1805-002	H03132	1/4	31/32	31/32	31/32	7/8	7/8	7/8	None	None	None
1805-005	H07132	1/2	1-1/4	1-1/4	1-1/4	1-9/32	1-9/32	1-9/32	None	None	None
1805-007	H08132	3/4	7/8	7/8	7/8	1-1/2	1-1/2	1-1/2	None	None	None
1805-010	H10132	1	5/8	5/8	5/8	1-13/16	1-13/16	1-13/16	None	None	None
1805-012	H14132	1-1/4	1-15/16	1-15/16	1-15/16	2-7/32	2-7/32	2-7/32	None	None	None
1805-015	H17132	1-1/2	2-1/8	2-1/8	2-1/8	2-1/2	2-1/2	2-1/2	None	None	None
1805-020	H20132	2	2-1/2	2-1/2	2-1/2	3	3	3	None	None	None
1805-025	H27132	2-1/2	3-23/32	3-23/32	3-23/32	3-9/16	3-9/16	3-9/16	None	None	None
1805-030	H30132	3	4-5/32	4-5/32	4-5/32	4-5/16	4-5/16	4-5/16	None	None	None
1805-040	H40132	4	4-13/16	4-13/16	4-13/16	5-7/16	5-7/16	5-7/16	None	None	None

90° ELBOW

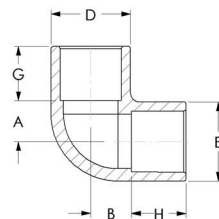
Soc x Soc



UNIV.#	PART#	SIZE	A	B	C	D	E	F	G	H	J
1806-002	H03100	1/4	11/32	11/32	None	13/16	13/16	None	21/32	21/32	None
1806-005	H07100	1/2	9/16	9/16	None	1-7/32	1-7/32	None	29/32	29/32	None
1806-007	H08100	3/4	5/8	5/8	None	1-7/16	1-7/16	None	1-1/32	1-1/32	None
1806-010	H10100	1	3/4	3/4	None	1-3/4	1-3/4	None	1-5/32	1-5/32	None
1806-012	H14100	1-1/4	15/16	15/16	None	2-1/8	2-1/8	None	1-5/16	1-5/16	None
1806-015	H17100	1-1/2	1-1/16	1-1/16	None	2-13/32	2-13/32	None	1-7/16	1-7/16	None
1806-020	H20100	2	1-5/16	1-5/16	None	2-29/32	2-29/32	None	1-9/16	1-9/16	None
1806-025	H27100	2-1/2	1-17/32	1-17/32	None	3-17/32	3-17/32	None	1-27/32	1-27/32	None
1806-030	H30100	3	1-13/16	1-13/16	None	4-7/32	4-7/32	None	1-15/16	1-15/16	None
1806-040	H40100	4	2-11/32	2-11/32	None	5-5/16	5-5/16	None	2-5/16	2-5/16	None
1806-060	H60100	6	3-9/16	3-9/16	None	7-9/16	7-9/16	None	3-1/16	3-1/16	None

**90° ELBOW**

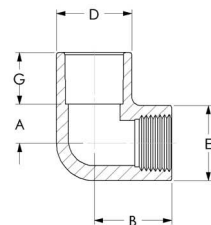
Soc x Soc (continued)



UNIV.#	PART#	SIZE	A	B	C	D	E	F	G	H	J
1806-080	H80100	8	4-9/16	4-9/16	None	9-23/32	9-23/32	None	4-1/32	4-1/32	None
1806-100	H100100	10	5-3/4	5-3/4	None	12-1/16	12-1/16	None	5-1/2	5-1/2	None
1806-120	H120100	12	6-15/16	6-15/16	None	14-1/4	14-1/4	None	6-1/2	6-1/2	None

90° ELBOW

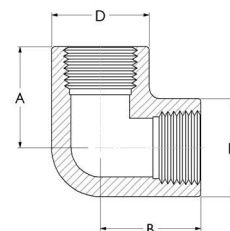
Soc x FPT



UNIV.#	PART#	SIZE	A	B	C	D	E	F	G	H	J
1807-005	H07106	1/2	17/32	1-5/8	None	1-5/16	1-5/16	None	1-1/16	None	None
1807-007	H08107	3/4	9/16	1-3/4	None	1-17/32	1-17/32	None	1-5/32	None	None
1807-010	H10108	1	3/4	1-3/8	None	1-27/32	1-27/32	None	1-11/32	None	None
1807-012	H14107	1-1/4	29/32	2-11/32	None	2-7/32	2-7/32	None	1-13/32	None	None
1807-015	H17107	1-1/2	1-1/16	2-11/16	None	2-17/32	2-17/32	None	1-5/8	None	None
1807-020	H20107	2	1-9/32	3-1/16	None	3	3	None	1-3/4	None	None

90° ELBOW

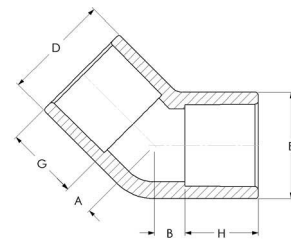
FPT x FPT



UNIV.#	PART#	SIZE	A	B	C	D	E	F	G	H	J
1808-002	H03102	1/4	15/16	15/16	None	7/8	7/8	None	None	None	None
1808-005	H07102	1/2	1-1/4	1-1/4	None	1-5/16	1-5/16	None	None	None	None
1808-007	H08102	3/4	1-3/8	1-3/8	None	1-1/2	1-1/2	None	None	None	None
1808-010	H10102	1	1-23/32	1-23/32	None	1-13/16	1-13/16	None	None	None	None
1808-012	H14102	1-1/4	1-29/32	1-29/32	None	2-7/32	2-7/32	None	None	None	None
1808-015	H17102	1-1/2	2-3/32	2-3/32	None	2-17/32	2-17/32	None	None	None	None
1808-020	H20102	2	2-7/16	2-7/16	None	3	3	None	None	None	None
1808-025	H27102	2-1/2	3-23/32	3-23/32	None	3-9/16	3-9/16	None	None	None	None
1808-030	H30102	3	4-5/32	4-5/32	None	4-5/16	4-5/16	None	None	None	None
1808-040	H40102	4	4-13/16	4-13/16	None	5-3/8	5-3/8	None	None	None	None

45° ELBOW

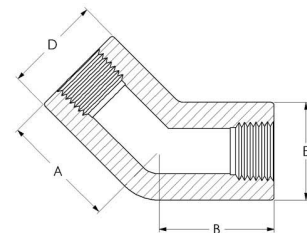
Soc x Soc



UNIV.#	PART#	SIZE	A	B	C	D	E	F	G	H	J
1817-002	H03110	1/4	5/32	5/32	None	7/8	7/8	None	21/32	21/32	None
1817-005	H07110	1/2	9/16	9/16	None	1-1/16	1-1/16	None	1-5/16	1-5/16	None
1817-007	H08110	3/4	5/8	5/8	None	1-3/32	1-3/32	None	1-1/2	1-1/2	None
1817-010	H10110	1	3/4	3/4	None	1-11/32	1-11/32	None	1-13/16	1-13/16	None
1817-012	H14110	1-1/4	15/16	15/16	None	2-7/32	2-7/32	None	1-7/16	1-7/16	None
1817-015	H17110	1-1/2	1-1/16	1-1/16	None	2-17/32	2-17/32	None	1-5/8	1-5/8	None
1817-020	H20110	2	1-5/16	1-5/16	None	3-1/32	3-1/32	None	1-23/32	1-23/32	None
1817-025	H27110	2-1/2	3/4	3/4	None	3-1/2	3-1/2	None	1-13/16	1-13/16	None
1817-030	H30110	3	13/16	13/16	None	4-7/32	4-7/32	None	1-15/16	1-15/16	None
1817-040	H40110	4	1-1/16	1-1/16	None	5-5/16	5-5/16	None	2-5/16	2-5/16	None
1817-060	H60110	6	3-9/16	3-9/16	None	7-19/32	7-19/32	None	3-9/16	3-9/16	None
1817-080	H80110	8	4-9/16	4-9/16	None	9-3/4	9-3/4	None	4-1/16	4-1/16	None
1817-100	H100110	10	2-9/16	2-9/16	None	12-1/16	12-1/16	None	5-1/2	5-1/2	None
1817-120	H120110	12	3-1/16	3-1/16	None	14-1/4	14-1/4	None	6-1/2	6-1/2	None

45° ELBOW

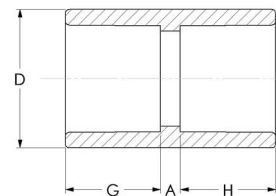
FPT x FPT



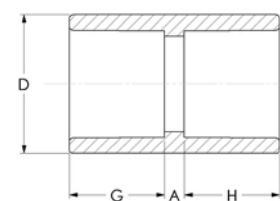
UNIV.#	PART#	SIZE	A	B	C	D	E	F	G	H	J
1819-002	H03111	1/4	3/4	3/4	None	7/8	7/8	None	None	None	None
1819-005	H07111	1/2	1-3/8	1-3/8	None	1-5/16	1-5/16	None	None	None	None
1819-007	H08111	3/4	1-1/2	1-1/2	None	1-1/2	1-1/2	None	None	None	None
1819-010	H10111	1	1-23/32	1-23/32	None	1-13/16	1-13/16	None	None	None	None
1819-012	H14111	1-1/4	1-7/8	1-7/8	None	2-7/32	2-7/32	None	None	None	None
1819-015	H17111	1-1/2	2-3/16	2-3/16	None	2-17/32	2-17/32	None	None	None	None
1819-020	H20111	2	2-1/2	2-1/2	None	3	3	None	None	None	None
1819-025	H27111	2-1/2	2-21/32	2-21/32	None	3-9/16	3-9/16	None	None	None	None
1819-030	H30111	3	2-27/32	2-27/32	None	4-5/16	4-5/16	None	None	None	None
1819-040	H40111	4	3-7/16	3-7/16	None	5-5/16	5-5/16	None	None	None	None

COUPLING

Soc x Soc

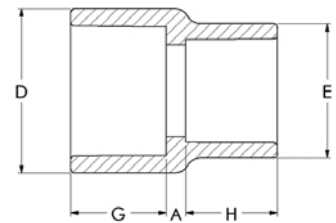


UNIV.#	PART#	SIZE	A	B	C	D	E	F	G	H	J
1829-002	H03140	1/4	1/8	None	None	13/16	None	None	9/16	9/16	None
1829-005	H07140	1/2	5/32	None	None	1-3/16	None	None	29/32	29/32	None
1829-007	H08140	3/4	5/32	None	None	1-13/32	None	None	1-1/32	1-1/32	None



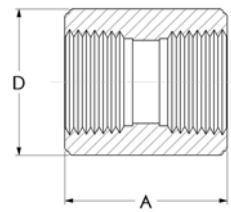
COUPLING
Soc x Soc (continued)

UNIV.#	PART#	SIZE	A	B	C	D	E	F	G	H	J
1829-010	H10140	1	5/32	None	None	1-3/4	None	None	1-5/32	1-5/32	None
1829-012	H14140	1-1/4	5/32	None	None	2-1/8	None	None	1-9/32	1-9/32	None
1829-015	H17140	1-1/2	5/32	None	None	2-3/8	None	None	1-13/32	1-13/32	None
1829-020	H20140	2	7/32	None	None	3-1/32	None	None	1-17/32	1-17/32	None
1829-025	H27140	2-1/2	7/32	None	None	3-9/16	None	None	2-3/16	2-3/16	None
1829-030	H30140	3	1/8	None	None	4-7/32	None	None	1-15/16	1-15/16	None
1829-040	H40140	4	1/8	None	None	5-5/16	None	None	2-5/16	2-5/16	None
1829-060	H60140	6	9/32	None	None	7-9/16	None	None	3-1/16	3-1/16	None
1829-080	H80140	8	11/32	None	None	9-23/32	None	None	4-1/16	4-1/16	None
1829-100	H100140	10	5/16	None	None	12-1/16	None	None	5-1/2	5-1/2	None
1829-120	H120140	12	7/16	None	None	14-1/4	None	None	6-1/2	6-1/2	None



COUPLING-REDUCING
Soc x Reducing Soc

UNIV.#	PART#	SIZE	A	B	C	D	E	F	G	H	J
1829-101	H08202	3/4 x 1/2	1/4	None	None	1-13/32	1-5/32	None	1	7/8	None
1829-130	H10202	1 x 1/2	7/32	None	None	1-23/32	1-7/16	None	1-3/32	7/8	None
1829-131	H10203	1 x 3/4	1/8	None	None	1-29/32	1-1/2	None	1-1/8	1-1/32	None
1829-168	H14204	1-1/4 x 1	13/32	None	None	2-3/32	1-23/32	None	1-7/32	1-3/32	None
1829-211	H17204	1-1/2 x 1	9/32	None	None	2-15/32	1-27/32	None	1-13/32	1-5/32	None
1829-212	H17205	1-1/2 x 1-1/4	7/32	None	None	2-15/32	2-7/32	None	1-13/32	1-9/32	None
1829-251	H20206	2 x 1-1/2	1/4	None	None	3-1/32	2-1/2	None	1-17/32	1-3/8	None
1829-338	H30207	3 x 2	19/32	None	None	4-5/16	3-1/32	None	2-11/32	1-7/8	None
1829-422	H40208	4 x 3	15/32	None	None	5-15/32	4-11/32	None	2-17/32	2-7/16	None
1829-532	H60209	6 x 4	3-13/32	None	None	7-1/2	5-1/4	None	3-1/32	2-9/32	None

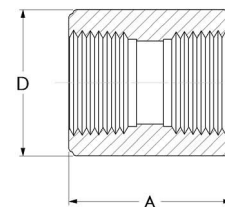


COUPLING
FPT x FPT

UNIV.#	PART#	SIZE	A	B	C	D	E	F	G	H	J
1830-002	H03141	1/4	1-3/8	None	None	7/8	None	None	None	None	None
1830-005	H07141	1/2	1-15/16	None	None	1-5/16	None	None	None	None	None
1830-007	H08141	3/4	1-31/32	None	None	1-17/32	None	None	None	None	None
1830-010	H10141	1	1	None	None	1-27/32	None	None	None	None	None
1830-012	H14141	1-1/4	2-11/16	None	None	2-7/32	None	None	None	None	None

**COUPLING**

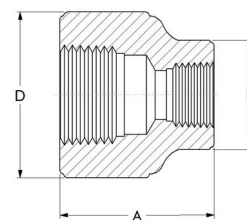
FPT x FPT (continued)



UNIV.#	PART#	SIZE	A	B	C	D	E	F	G	H	J
1830-015	H17141	1-1/2	2-15/16	None	None	2-15/32	None	None	None	None	None
1830-020	H20141	2	3-1/4	None	None	3-1/32	None	None	None	None	None
1830-025	H27141	2-1/2	4-9/16	None	None	3-9/16	None	None	None	None	None
1830-030	H30141	3	4-29/32	None	None	4-11/32	None	None	None	None	None
1830-040	H40141	4	5-1/4	None	None	5-7/16	None	None	None	None	None

COUPLING-REDUCING

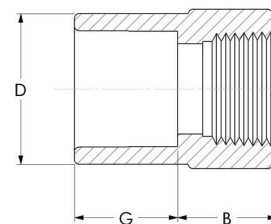
FPT x Reducing FPT



UNIV.#	PART#	SIZE	A	B	C	D	E	F	G	H	J
1830-101	H08175	3/4 x 1/2	2-3/8	None	None	1-19/32	1-5/16	None	None	None	None
1830-130	H10175	1 x 1/2	2-23/32	None	None	1-29/32	1-5/16	None	None	None	None
1830-131	H10177	1 x 3/4	2-5/16	None	None	1-13/16	1-1/2	None	None	None	None
1830-211	H17175	1-1/2 x 1	2-13/16	None	None	2-15/32	1-27/32	None	None	None	None

FEMALE ADAPTER

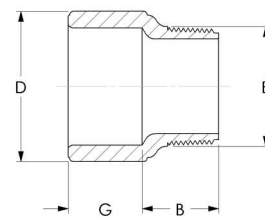
Soc x FPT



UNIV.#	PART#	SIZE	A	B	C	D	E	F	G	H	J
1835-002	H03151	1/4	None	23/32	None	27/32	None	None	21/32	None	None
1835-005	H07151	1/2	None	15/16	None	1-5/16	None	None	29/32	None	None
1835-007	H08151	3/4	None	15/16	None	1-17/32	None	None	1-1/32	None	None
1835-010	H10151	1	None	1-1/8	None	1-27/32	None	None	1-5/32	None	None
1835-012	H14151	1-1/4	None	1-1/32	None	2-1/8	None	None	1-5/16	None	None
1835-015	H17151	1-1/2	None	1-1/32	None	2-13/32	None	None	1-7/16	None	None
1835-020	H20151	2	None	1-5/32	None	2-29/32	None	None	1-9/16	None	None
1835-025	H27151	2-1/2	None	2-3/8	None	3-9/16	None	None	2-3/16	None	None
1835-030	H30151	3	None	2-9/16	None	4-5/16	None	None	2-11/32	None	None
1835-040	H40151	4	None	2-23/32	None	5-15/32	None	None	2-17/32	None	None

**MALE ADAPTER**

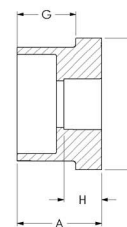
Soc x MPT



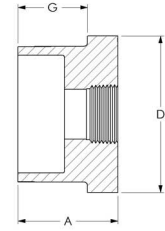
UNIV.#	PART#	SIZE	A	B	C	D	E	F	G	H	J
1836-005	H07150	1/2	None	1-1/8	None	1-7/32	7/8	None	29/32	None	None
1836-007	H08150	3/4	None	1-1/8	None	1-7/16	1-1/16	None	1-1/32	None	None
1836-010	H10150	1	None	1-9/32	None	1-3/4	1-3/8	None	1-5/32	None	None
1836-012	H14150	1-1/4	None	1-7/32	None	2-1/8	1-5/8	None	1-5/16	None	None
1836-015	H17150	1-1/2	None	1-9/32	None	2-13/32	1-7/8	None	1-7/16	None	None
1836-020	H20150	2	None	1-1/4	None	2-29/32	2-11/32	None	1-17/32	None	None
1836-025	H27150	2-1/2	None	1-17/32	None	3-1/2	2-27/32	None	1-29/32	None	None
1836-030	H30150	3	None	1-23/32	None	4-3/16	3-7/16	None	1-15/16	None	None
1836-040	H40150	4	None	1-3/4	None	5-5/16	4-7/16	None	2-5/16	None	None

REDUCING BUSHING

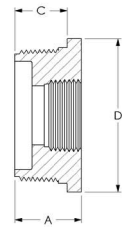
Spigot x Reducing Soc



UNIV.#	PART#	SIZE	A	B	C	D	E	F	G	H	J
1837-072	H07230	1/2 x 1/4	1-3/32	None	None	1	None	None	7/8	5/8	None
1837-073	H07232	1/2 x 3/8	1-1/16	None	None	29/32	None	None	7/8	13/16	None
1837-101	H08234	3/4 x 1/2	1-7/32	None	None	1-1/8	None	None	1-1/32	7/8	None
1837-130	H10232	1 x 1/2	1-7/16	None	None	1-3/8	None	None	1-3/16	7/8	None
1837-131	H10234	1 x 3/4	1-7/16	None	None	1-3/8	None	None	1-3/16	1-1/32	None
1837-166	H14230	1-1/4 x 1/2	1-9/16	None	None	1-23/32	None	None	1-1/4	7/8	None
1837-167	H14232	1-1/4 x 3/4	1-9/16	None	None	1-11/16	None	None	1-9/32	1	None
1837-168	H14234	1-1/4 x 1	1-9/16	None	None	1-11/16	None	None	1-1/4	1-5/32	None
1837-209	H17230	1-1/2 x 1/2	1-3/4	None	None	2	None	None	1-13/32	29/32	None
1837-210	H17232	1-1/2 x 3/4	1-3/4	None	None	2	None	None	1-13/32	1-1/32	None
1837-211	H17234	1-1/2 x 1	1-3/4	None	None	2	None	None	1-13/32	1-5/32	None
1837-212	H17236	1-1/2 x 1-1/4	1-3/4	None	None	2	None	None	1-7/16	1-1/4	None
1837-247	H20230	2 x 1/2	1-3/4	None	None	2-13/32	None	None	1-17/32	29/32	None
1837-248	H20232	2 x 3/4	1-13/16	None	None	2-13/32	None	None	1-17/32	1-1/32	None
1837-249	H20234	2 x 1	1-13/16	None	None	2-13/32	None	None	1-17/32	1-1/8	None
1837-250	H20236	2 x 1-1/4	1-13/16	None	None	2-13/32	None	None	1-17/32	1-1/4	None
1837-251	H20238	2 x 1-1/2	1-13/16	None	None	2-13/32	None	None	1-17/32	1-13/32	None
1837-292	H27236	2-1/2 x 2	2-1/8	None	None	3-5/16	None	None	2-7/32	1-17/32	None
1837-337	H30236	3 x 1-1/2	2-1/4	None	None	3-19/32	None	None	1-31/32	1-7/16	None
1837-338	H30238	3 x 2	2-1/4	None	None	3-19/32	None	None	1-31/32	1-9/16	None
1837-339	H30240	3 x 2-1/2	2-1/4	None	None	3-19/32	None	None	1-31/32	1-23/32	None
1837-420	H40236	4 x 2	2-5/8	None	None	4-9/16	None	None	2-5/16	1-9/16	None
1837-422	H40240	4 x 3	2-5/8	None	None	4-9/16	None	None	2-5/16	1-15/16	None
1837-532	H60230	6 x 4	3-15/32	None	None	6-3/4	None	None	3	2-5/16	None
1837-585	H80232	8 x 6	4-19/32	None	None	8-3/4	None	None	4-1/8	3-1/16	None

REDUCING BUSHING
 Spigot x Reducing FPT


UNIV.#	PART#	SIZE	A	B	C	D	E	F	G	H	J
1838-072	H07231	1/2 x 1/4	31/32	None	None	15/16	None	None	25/32	None	None
1838-101	H08235	3/4 x 1/2	1-1/4	None	None	1-1/8	None	None	1-1/32	None	None
1838-130	H10233	1 x 1/2	1-3/8	None	None	1-3/8	None	None	1-5/32	None	None
1838-131	H10235	1 x 3/4	1-3/8	None	None	1-3/8	None	None	1-5/32	None	None
1838-166	H14231	1-1/4 x 1/2	1-9/16	None	None	1-23/32	None	None	1-1/4	None	None
1838-167	H14233	1-1/4 x 3/4	1-1/2	None	None	1-3/4	None	None	1-9/32	None	None
1838-168	H14235	1-1/4 x 1	1-9/16	None	None	1-11/16	None	None	1-9/32	None	None
1838-209	H17231	1-1/2 x 1/2	1-3/4	None	None	2	None	None	1-13/32	None	None
1838-210	H17233	1-1/2 x 3/4	1-5/8	None	None	1-31/32	None	None	1-7/16	None	None
1838-211	H17235	1-1/2 x 1	1-5/8	None	None	1-31/32	None	None	1-7/16	None	None
1838-212	H17237	1-1/2 x 1-1/4	1-3/4	None	None	2	None	None	1-13/32	None	None
1838-247	H20231	2 x 1/2	1-27/32	None	None	2-13/32	None	None	1-17/32	None	None
1838-248	H20233	2 x 3/4	1-3/4	None	None	2-7/16	None	None	1-9/16	None	None
1838-249	H20235	2 x 1	1-3/4	None	None	2-7/16	None	None	1-9/16	None	None
1838-250	H20237	2 x 1-1/4	1-3/4	None	None	2-7/16	None	None	1-9/16	None	None
1838-251	H20239	2 x 1-1/2	1-3/4	None	None	2-7/16	None	None	1-9/16	None	None
1838-292	H27237	2-1/2 x 2	2-1/2	None	None	3-5/16	None	None	2-7/32	None	None
1838-338	H30239	3 x 2	2-5/8	None	None	4-1/32	None	None	2-3/8	None	None
1838-339	H30241	3 x 2-1/2	2-5/8	None	None	4-1/32	None	None	2-3/8	None	None
1838-420	H40237	4 x 2	2-13/16	None	None	4-15/16	None	None	2-1/2	None	None
1838-422	H40241	4 x 3	2-25/32	None	None	4-15/16	None	None	2-1/2	None	None

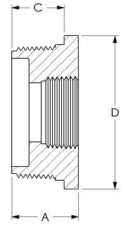
REDUCING BUSHING
 MPT x Reducing FPT


UNIV.#	PART#	SIZE	A	B	C	D	E	F	G	H	J
1839-101	H08222	3/4 x 1/2	1-1/32	None	27/32	1-1/8	None	None	None	None	None
1839-130	H10222	1 x 1/2	1-7/32	None	31/32	1-11/32	None	None	None	None	None
1839-131	H10223	1 x 3/4	1-7/32	None	31/32	1-11/32	None	None	None	None	None
1839-166	H14220	1-1/4 x 1/2	1-1/4	None	1	1-11/16	None	None	None	None	None
1839-167	H14221	1-1/4 x 3/4	1-1/4	None	1	1-11/16	None	None	None	None	None
1839-168	H14222	1-1/4 x 1	1-1/4	None	1	1-11/16	None	None	None	None	None
1839-209	H17220	1-1/2 x 1/2	1-11/32	None	1	1-29/32	None	None	None	None	None
1839-210	H17221	1-1/2 x 3/4	1-11/32	None	1	1-15/16	None	None	None	None	None
1839-211	H17222	1-1/2 x 1	1-11/32	None	1	1-29/32	None	None	None	None	None
1839-212	H17223	1-1/2 x 1-1/4	1-11/32	None	1-1/32	1-29/32	None	None	None	None	None
1839-247	H20220	2 x 1/2	1-3/8	None	1-1/16	2-13/32	None	None	None	None	None
1839-248	H20221	2 x 3/4	1-13/32	None	1-1/16	2-13/32	None	None	None	None	None
1839-249	H20222	2 x 1	1-13/32	None	1-1/16	2-13/32	None	None	None	None	None
1839-250	H20223	2 x 1-1/4	1-13/32	None	1-1/16	2-13/32	None	None	None	None	None
1839-251	H20224	2 x 1-1/2	1-13/32	None	1-3/32	2-13/32	None	None	None	None	None
1839-292	H27223	2-1/2 x 2	1-9/32	None	2-7/32	3-5/16	None	None	None	None	None
1839-337	H30219	3 x 1-1/2	2-5/8	None	2-3/8	4	None	None	None	None	None
1839-338	H30220	3 x 2	2-5/8	None	2-3/8	4-1/32	None	None	None	None	None



REDUCING BUSHING

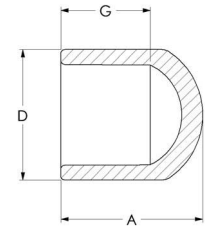
MPT x Reducing FPT (continued)



UNIV.#	PART#	SIZE	A	B	C	D	E	F	G	H	J
1839-339	H30221	3 x 2-1/2	2-5/8	None	2-3/8	4-1/32	None	None	None	None	None
1839-420	H40219	4 x 2	2-25/32	None	2-17/32	4-15/16	None	None	None	None	None
1839-422	H40220	4 x 3	2-25/32	None	2-15/32	4-15/16	None	None	None	None	None

CAP*

Soc

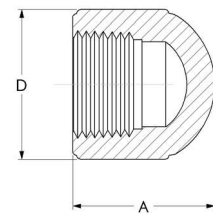


UNIV.#	PART#	SIZE	A	B	C	D	E	F	G	H	J
1847-002	H03260	1/4	15/16	None	None	13/16	None	None	21/32	None	None
1847-005	H07260	1/2	1-3/8	None	None	1-3/16	None	None	31/32	None	None
1847-007	H08260	3/4	1-19/32	None	None	1-13/32	None	None	1-1/16	None	None
1847-010	H10260	1	1-25/32	None	None	1-3/4	None	None	1-5/32	None	None
1847-012	H14260	1-1/4	1-31/32	None	None	2-1/8	None	None	1-11/32	None	None
1847-015	H17260	1-1/2	2-7/32	None	None	2-3/8	None	None	1-1/2	None	None
1847-020	H20260	2	2-11/16	None	None	3-1/32	None	None	1-11/16	None	None
1847-025	H27260	2-1/2	3-11/32	None	None	3-9/16	None	None	2-9/32	None	None
1847-030	H30260	3	3-7/16	None	None	4-5/16	None	None	2-3/16	None	None
1847-040	H40260	4	3-23/32	None	None	5-15/32	None	None	2-17/32	None	None
1847-060	H60260	6	5-19/32	None	None	7-21/32	None	None	3-21/32	None	None

* Note: If using for water filter assembly, contact customer service for pertinent information.

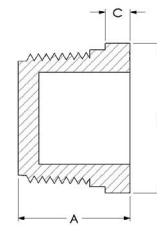
CAP*

FPT

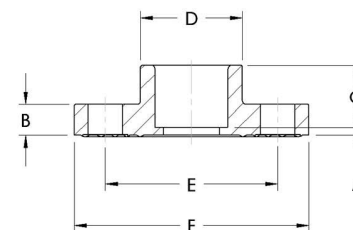


UNIV.#	PART#	SIZE	A	B	C	D	E	F	G	H	J
1848-002	H03261	1/4	7/8	None	None	13/16	None	None	None	None	None
1848-005	H07261	1/2	1-1/4	None	None	1-5/16	None	None	None	None	None
1848-007	H08261	3/4	1-11/16	None	None	1-17/32	None	None	None	None	None
1848-010	H10261	1	1-17/32	None	None	1-27/32	None	None	None	None	None
1848-012	H14261	1-1/4	2-1/8	None	None	2-7/32	None	None	None	None	None
1848-015	H17261	1-1/2	2-9/32	None	None	2-15/32	None	None	None	None	None
1848-020	H20261	2	1-15/16	None	None	3-1/32	None	None	None	None	None
1848-025	H27261	2-1/2	3-11/32	None	None	3-9/16	None	None	None	None	None
1848-030	H30261	3	3-7/16	None	None	4-5/16	None	None	None	None	None
1848-040	H40261	4	3-11/16	None	None	5-7/16	None	None	None	None	None

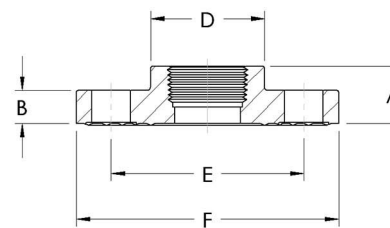
* Note: If using for water filter assembly, contact customer service for pertinent information.

**PLUG
MPT**


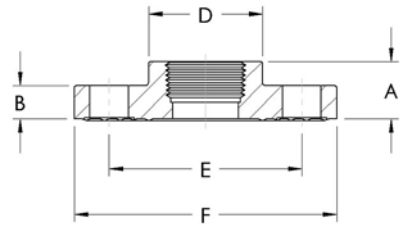
UNIV.#	PART#	SIZE	A	B	C	D	E	F	G	H	J
1850-002	H03251	1/4	13/16	None	19/32	11/16	None	None	None	None	None
1850-005	H07251	1/2	1	None	25/32	29/32	None	None	None	None	None
1850-007	H08251	3/4	1-1/32	None	27/32	1-1/8	None	None	None	None	None
1850-010	H10251	1	1-7/32	None	31/32	1-11/32	None	None	None	None	None
1850-012	H14251	1-1/4	1-1/4	None	1	1-11/16	None	None	None	None	None
1850-015	H17251	1-1/2	1-11/32	None	1-1/32	1-29/32	None	None	None	None	None
1850-020	H20251	2	1-7/16	None	1-1/16	2-13/32	None	None	None	None	None
1850-025	H27251	2-1/2	2-1/32	None	1-5/8	2-31/32	None	None	None	None	None
1850-030	H30251	3	2-11/16	None	2-3/8	4	None	None	None	None	None
1850-040	H40251	4	2-13/16	None	2-9/16	4-15/16	None	None	None	None	None

**FLANGE COMPANION
Soc**


UNIV.#	PART#	SIZE	A	B	C	D	E	F	G	H	J
1851-005	H07270	1/2	3/16	7/16	None	1-5/16	2-3/8	3-1/2	29/32	None	None
1851-007	H08270	3/4	5/32	17/32	None	1-17/32	2-3/4	3-7/8	1-5/16	None	None
1851-010	H10270	1	5/32	19/32	None	1-27/32	3-1/8	4-1/4	1-5/32	None	None
1851-012	H14270	1-1/4	5/32	5/8	None	2-7/32	3-1/2	4-5/8	1-9/32	None	None
1851-015	H17270	1-1/2	5/32	23/32	None	2-1/2	3-7/8	5	1-3/8	None	None
1851-020	H20270	2	7/32	25/32	None	3	4-3/4	6	1-17/32	None	None
1851-025	H27270	2-1/2	7/32	7/8	None	3-9/16	5-1/2	7	1-25/32	None	None
1851-030	H30270	3	7/32	31/32	None	4-5/16	6	7-1/2	1-7/8	None	None
1851-040	H40270	4	5/16	1-1/16	None	5-17/32	7-1/2	9-1/16	2-9/32	None	None
1851-060	H60270	6	7/32	1-1/16	None	7-23/32	9-1/2	11-1/32	3	None	None

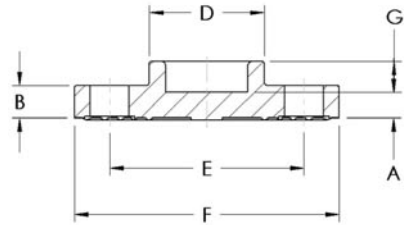
**FLANGE COMPANION
FPT**


UNIV.#	PART#	SIZE	A	B	C	D	E	F	G	H	J
1852-005	H07271	1/2	1-1/16	7/16	None	1-5/16	2-3/8	3-1/2	None	None	None
1852-007	H08271	3/4	1-15/32	17/32	None	1-17/32	2-3/4	3-7/8	None	None	None
1852-010	H10271	1	1-5/16	19/32	None	1-27/32	3-1/8	4-1/4	None	None	None
1852-012	H14271	1-1/4	1-13/32	5/8	None	2-7/32	3-1/2	4-5/8	None	None	None
1852-015	H17271	1-1/2	1-17/32	23/32	None	2-1/2	3-7/8	5	None	None	None
1852-020	H20271	2	1-23/32	25/32	None	3	4-3/4	6	None	None	None

**FLANGE COMPANION**

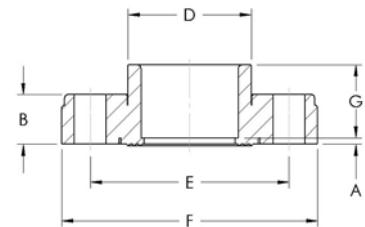
FPT (continued)

UNIV.#	PART#	SIZE	A	B	C	D	E	F	G	H	J
1852-025	H27271	2-1/2	1-31/32	7/8	None	3-9/16	5-1/2	7	None	None	None
1852-030	H30271	3	2-3/32	31/32	None	4-5/16	6	7-1/2	None	None	None
1852-040	H40271	4	1-9/32	1-1/16	None	5-17/32	7-1/2	9-1/16	None	None	None

**FLANGE BLIND**

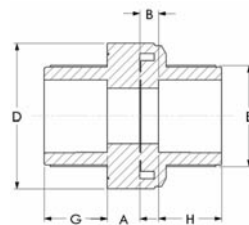
Soc

UNIV.#	PART#	SIZE	A	B	C	D	E	F	G	H	J
1853-005	H07272	1/2	9/32	15/32	None	1-5/16	2-3/8	3-1/2	15/32	None	None
1853-007	H08272	3/4	9/32	1/2	None	1-17/32	2-3/4	3-7/8	1/2	None	None
1853-010	H10272	1	9/32	9/16	None	1-27/32	3-1/8	4-1/4	7/16	None	None
1853-012	H14272	1-1/4	1/2	21/32	None	2-1/4	3-1/2	4-5/8	13/32	None	None
1853-015	H17272	1-1/2	7/16	23/32	None	2-1/2	3-7/8	5	15/32	None	None
1853-020	H20272	2	1/2	25/32	None	3	4-3/4	6	7/16	None	None
1853-025	H27272	2-1/2	1/2	13/16	None	3-19/32	5-1/2	7	19/32	None	None
1853-030	H30272	3	25/32	15/16	None	4-5/16	6	7-1/2	13/32	None	None
1853-040	H40272	4	21/32	1-1/16	None	5-1/2	7-1/2	9-1/16	1/2	None	None
1853-060	H60272	6	13/16	1-1/32	None	7-11/16	9-1/2	11-1/32	3/4	None	None

**FLANGE VAN STONE STYLE LOOSE RING**

Soc

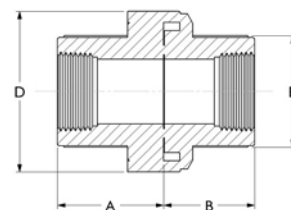
UNIV.#	PART#	SIZE	A	B	C	D	E	F	G	H	J
1854-015	H17273	1-1/2	1/8	31/32	None	2-1/2	3-7/8	5	1-7/16	None	None
1854-020	H20273	2	1/8	1-1/16	None	3	4-3/4	6	1-9/16	None	None
1854-025	H27273	2-1/2	3/16	1-3/16	None	3-9/16	5-1/2	7	1-13/16	None	None
1854-030	H30273	3	5/16	1-11/32	None	4-3/16	6	7-5/8	2-1/8	None	None
1854-040	H40273	4	7/16	1-3/8	None	5-1/4	7-1/2	9-1/8	2-1/4	None	None
1854-060	H60273	6	13/32	1-5/8	None	7-19/32	9-1/2	11-1/32	3-3/16	None	None
1854-080	H80273	8	3/8	2-1/16	None	9-23/32	11-3/4	13-9/16	4-1/8	None	None


UNION

Soc x Soc with O-ring made of Viton®

UNIV.#	PART#	SIZE	A	B	C	D	E	F	G	H	J
1857-005	H07286	1/2	29/64	1/8	None	2	1-17/64	None	3/4	3/4	None
1857-007	H08286	3/4	47/64	33/64	None	2-9/32	1-1/2	None	13/16	13/16	None
1857-010	H10286	1	19/32	11/32	None	2-21/32	1-27/32	None	1-5/32	1-5/32	None
1857-012	H14286	1-1/4	43/64	11/32	None	3-3/32	2-5/32	None	1-9/32	1-9/32	None
1857-015	H17286	1-1/2	45/64	29/64	None	3-3/8	2-41/64	None	1-13/32	1-13/32	None
1857-020	H20286	2	3/4	15/64	None	4-1/16	3	None	1-17/32	1-17/32	None
1857-030	H30286	3	19/64	21/64	None	6-1/4	4-7/16	None	1-29/32	1-29/32	None

Note: Soc x Soc and Thread x Thread are now interchangeable to Soc x Thread. These unions are now available with EPDM O-rings. Contact customer service for details.


UNION

FPT x FPT with O-ring made of Viton®

UNIV.#	PART#	SIZE	A	B	C	D	E	F	G	H	J
1858-005	H07285	1/2	1-13/64	7/8	None	2	1-17/64	None	None	None	None
1858-007	H08285	3/4	1-35/64	1-21/64	None	2-9/32	1-1/2	None	None	None	None
1858-010	H10285	1	1-3/4	1-1/2	None	2-21/32	1-27/32	None	None	None	None
1858-012	H14285	1-1/4	1-61/64	1-5/8	None	3-3/32	2-5/32	None	None	None	None
1858-015	H17285	1-1/2	2-7/64	1-55/64	None	3-3/8	2-41/64	None	None	None	None
1858-020	H20285	2	2-9/32	1-49/64	None	4-1/16	3	None	None	None	None
1858-030	H30285	3	2-13/64	2-15/64	None	6-1/4	4-7/16	None	None	None	None

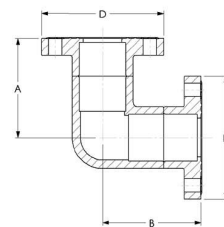
Note: Soc x Soc and Thread x Thread are now interchangeable to Soc x Thread. These unions are now available with EPDM O-rings. Contact customer service for details.

FPT STAINLESS STEEL END PIECE FOR SCH 80 UNIONS (316 STAINLESS STEEL)

PART#	SIZE	
C07284SS	1/2	For proper transition from metal to plastic. Order appropriately sized union separately.
C08284SS	3/4	Please refer to page 32 (Method 4) for details on transition installations.
C10284SS	1	
C14284SS	1-1/4	
C17284SS	1-1/2	
C20284SS	2	

**90° ELBOW**

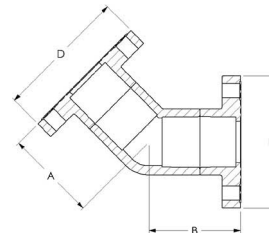
Flange x Flange



UNIV.#	PART#	SIZE	A	B	C	D	E	F	G	H	J
1806-010FL	H10109	1	3-7/32	3-7/32	None	4-1/4	4-1/4	None	None	None	None
1806-012FL	H14109	1-1/4	3-21/32	3-21/32	None	4-5/8	4-5/8	None	None	None	None
1806-015FL	H17109	1-1/2	4-1/32	4-1/32	None	5	5	None	None	None	None
1806-020FL	H20109	2	4-19/32	4-19/32	None	6	6	None	None	None	None
1806-025FL	H27109	2-1/2	5-11/32	5-11/32	None	7	7	None	None	None	None
1806-030FL	H30109	3	5-27/32	5-27/32	None	7-1/2	7-1/2	None	None	None	None
1806-040FL	H40109	4	7-1/4	7-1/4	None	9-1/16	9-1/16	None	None	None	None
1806-060FL	H60109	6	9-27/32	9-27/32	None	11-1/32	11-1/32	None	None	None	None

45° ELBOW

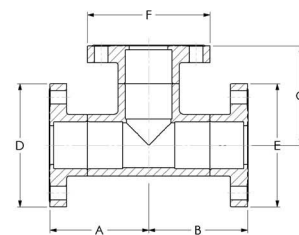
Flange x Flange



UNIV.#	PART#	SIZE	A	B	C	D	E	F	G	H	J
1817-010FL	H10112	1	3-7/8	3-7/8	None	4-1/4	4-1/4	None	None	None	None
1817-012FL	H14112	1-1/4	3-25/32	3-25/32	None	4-5/8	4-5/8	None	None	None	None
1817-015FL	H17112	1-1/2	4-7/32	4-7/32	None	5	5	None	None	None	None
1817-020FL	H20112	2	4-3/4	4-3/4	None	6	6	None	None	None	None
1817-025FL	H27112	2-1/2	4-17/32	4-17/32	None	7	7	None	None	None	None
1817-030FL	H30112	3	4-27/32	4-27/32	None	7-1/2	7-1/2	None	None	None	None
1817-040FL	H40112	4	5-31/32	5-31/32	None	9-1/16	9-1/16	None	None	None	None
1817-060FL	H60112	6	10-11/32	10-11/32	None	11-1/32	11-1/32	None	None	None	None

TEE

Flange x Flange x Flange



UNIV.#	PART#	SIZE	A	B	C	D	E	F	G	H	J
1801-010FL	H10131	1	3-3/8	3-3/8	3-3/8	4-1/4	4-1/4	4-1/4	None	None	None
1801-012FL	H14131	1-1/4	3-23/32	3-23/32	3-23/32	4-5/8	4-5/8	4-5/8	None	None	None
1801-015FL	H17131	1-1/2	4-1/4	4-1/4	4-1/4	5	5	5	None	None	None
1801-020FL	H20131	2	4-11/16	4-11/16	4-11/16	6	6	6	None	None	None
1801-025FL	H27131	2-1/2	5-23/32	5-23/32	5-23/32	7	7	7	None	None	None
1801-030FL	H30131	3	5-29/32	5-29/32	5-29/32	7-1/2	7-1/2	7-1/2	None	None	None
1801-040FL	H40131	4	7-15/32	7-15/32	7-15/32	9-1/16	9-1/16	9-1/16	None	None	None
1801-060FL	H60131	6	9-27/32	9-27/32	9-27/32	11-1/32	11-1/32	11-1/32	None	None	None