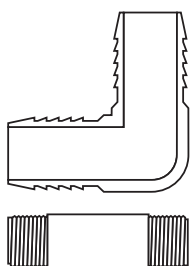




PVC (Polyvinyl Chloride) Schedule 80 is a heavy duty version of Schedule 40. It has the same temperature/chemical range as Schedule 40, but at higher pressures due to its thicker walls.

Because of its higher pressure capability, it is often selected for commercial, industrial, agricultural and irrigation applications that are more demanding and require more robust piping.

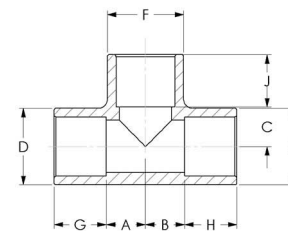


Colonial Engineering also offers PVC Insert Fittings for use with flexible polyethylene pipe and Threaded Pipe Nipples in PVC and CPVC. See our list price sheets for more information.

CUSTOMER SERVICE
Michigan (800) 374 0234
Florida (800) 432 6224
www.colonialengineering.com

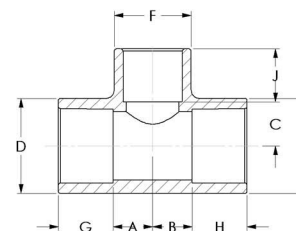


TEE
All Soc



UNIV.#	PART#	SIZE	A	B	C	D	E	F	G	H	J
801-002	C03120	1/4	11/32	11/32	11/32	13/16	13/16	13/16	21/32	21/32	21/32
801-003	C05120	3/8	7/16	7/16	7/16	1	1	1	3/4	3/4	3/4
801-005	C07120	1/2	9/16	9/16	9/16	1-9/32	1-9/32	1-9/32	1-1/16	1-1/16	1-1/16
801-007	C08120	3/4	19/32	19/32	19/32	1-17/32	1-17/32	1-17/32	1-1/8	1-1/8	1-1/8
801-010	C10120	1	3/4	3/4	3/4	1-27/32	1-27/32	1-27/32	1-5/16	1-5/16	1-5/16
801-012	C14120	1-1/4	29/32	29/32	29/32	2-7/32	2-7/32	2-7/32	1-13/32	1-13/32	1-13/32
801-015	C17120	1-1/2	1-1/16	1-1/16	1-1/16	2-1/2	2-1/2	2-1/2	1-21/32	1-21/32	1-21/32
801-020	C20120	2	1-7/32	1-7/32	1-7/32	3	3	3	1-3/4	1-3/4	1-3/4
801-025	C27120	2-1/2	1-17/32	1-17/32	1-17/32	3-9/16	3-9/16	3-9/16	2-7/32	2-7/32	2-7/32
801-030	C30120	3	1-7/8	1-7/8	1-7/8	4-7/32	4-7/32	4-7/32	1-15/16	1-15/16	1-15/16
801-040	C40120	4	2-3/8	2-3/8	2-3/8	5-7/16	5-7/16	5-7/16	2-1/2	2-1/2	2-1/2
801-060	C60120	6	3-9/16	3-9/16	3-9/16	7-19/32	7-19/32	7-19/32	3-1/16	3-1/16	3-1/16
801-080	C80120	8	4-15/32	4-15/32	4-15/32	9-23/32	9-23/32	9-23/32	4-1/32	4-1/32	4-1/32
801-100	801-100	10	5-3/4	5-3/4	5-3/4	12-1/16	12-1/16	12-1/16	5-1/2	5-1/2	5-1/2
801-120	801-120	12	6-15/16	6-15/16	6-15/16	14-1/4	14-1/4	14-1/4	6-1/2	6-1/2	6-1/2

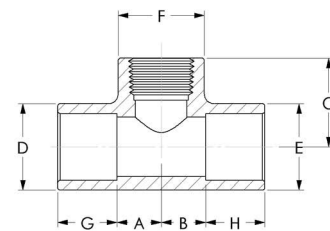
TEE
Soc x Soc x Reducing Soc



UNIV.#	PART#	SIZE	A	B	C	D	E	F	G	H	J
801-101	C08122	3/4 x 3/4 x 1/2	9/16	9/16	5/8	1-1/2	1-1/2	1-7/32	1-1/16	1-1/16	29/32
801-130	C10122	1 x 1 x 1/2	19/32	19/32	13/16	1-27/32	1-27/32	1-3/16	1-1/8	1-1/8	29/32
801-131	C10124	1 x 1 x 3/4	11/16	11/16	27/32	1-27/32	1-27/32	1-13/32	1-5/32	1-5/32	1-1/32
801-210	C17124	1-1/2 x 1-1/2 x 3/4	11/16	11/16	1	2-5/16	2-5/16	1-3/8	1-3/8	1-3/8	1
801-211	C17126	1-1/2 x 1-1/2 x 1	29/32	29/32	1-5/32	2-11/32	2-11/32	1-23/32	1-3/8	1-3/8	1-1/8
801-247	C20122	2 x 2 x 1/2	17/32	17/32	1-9/32	2-29/32	2-29/32	1-7/32	1-17/32	1-17/32	29/32
801-248	C20124	2 x 2 x 3/4	19/32	19/32	1-9/32	2-29/32	2-29/32	1-7/16	1-17/32	1-17/32	1-1/32
801-249	C20126	2 x 2 x 1	23/32	23/32	1-9/32	2-29/32	2-29/32	1-13/16	1-17/32	1-17/32	1-5/32
801-251	C20130	2 x 2 x 1-1/2	1-1/32	1-1/32	1-9/32	2-29/32	2-29/32	2-1/2	1-17/32	1-17/32	1-13/32
801-289	C27124	2-1/2 x 2-1/2 x 1	25/32	25/32	1-23/32	3-1/2	3-1/2	1-23/32	1-13/16	1-13/16	1-1/8
801-291	C27128	2-1/2 x 2-1/2 x 1-1/2	1-5/32	1-5/32	1-23/32	3-1/2	3-1/2	2-5/16	1-25/32	1-25/32	1-3/8
801-292	C27130	2-1/2 x 2-1/2 x 2	1-13/32	1-13/32	1-9/16	3-15/32	3-15/32	2-27/32	1-3/4	1-3/4	1-17/32
801-338	C30130	3 x 3 x 2	1-5/16	1-5/16	1-7/8	4-7/32	4-7/32	3-1/32	1-15/16	1-15/16	1-17/32
801-420	C40130	4 x 4 x 2	1-5/16	1-5/16	2-5/16	5-5/16	5-5/16	3-1/32	2-5/16	2-5/16	1-17/32
801-422	C40136	4 x 4 x 3	1-13/16	1-13/16	2-9/32	5-5/16	5-5/16	4-7/32	2-5/16	2-5/16	1-15/16
801-530	C60136	6 x 6 x 3	1-29/32	1-29/32	3-1/2	7-9/16	7-9/16	4-7/32	3-1/32	3-1/32	1-7/8
801-532	C60138	6 x 6 x 4	2-3/8	2-3/8	3-9/32	7-9/16	7-9/16	5-1/4	3-3/32	3-3/32	2-5/16
801-585	C80138	8 x 8 x 6	3-3/4	3-3/4	4-3/16	9-11/16	9-11/16	7-17/32	4-1/32	4-1/32	3-1/32

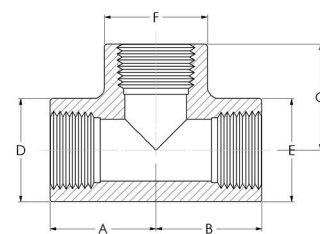


TEE
Soc x Soc x FPT



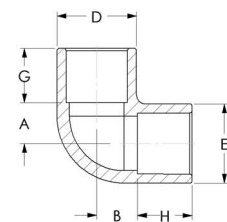
UNIV.#	PART#	SIZE	A	B	C	D	E	F	G	H	J
802-005	C07183	1/2	9/16	9/16	2-1/4	1-9/32	1-9/32	1-9/32	1-1/16	1-1/16	None
802-007	C08185	3/4	5/8	5/8	2-7/16	1-17/32	1-17/32	1-17/32	1-1/8	1-1/8	None
802-010	C10187	1	3/4	3/4	2-31/32	1-27/32	1-27/32	1-27/32	1-5/16	1-5/16	None
802-012	C14189	1-1/4	15/16	15/16	3-7/16	2-7/32	2-7/32	2-7/32	1-13/32	1-13/32	None
802-015	C17191	1-1/2	1	1	3-15/16	2-1/2	2-1/2	2-1/2	1-21/32	1-21/32	None
802-020	C20193	2	1-5/16	1-5/16	4-1/2	3	3	3	1-25/32	1-25/32	None

TEE
All FPT



UNIV.#	PART#	SIZE	A	B	C	D	E	F	G	H	J
805-002	C03132	1/4	31/32	31/32	31/32	7/8	7/8	7/8	None	None	None
805-003	C05132	3/8	1-1/32	1-1/32	1-1/32	1-1/16	1-1/32	1-1/32	None	None	None
805-005	C07132	1/2	1-1/4	1-1/4	1-1/4	1-9/32	1-9/32	1-9/32	None	None	None
805-007	C08132	3/4	7/8	7/8	7/8	1-1/2	1-1/2	1-1/2	None	None	None
805-010	C10132	1	5/8	5/8	5/8	1-13/16	1-13/16	1-13/16	None	None	None
805-012	C14132	1-1/4	1-15/16	1-15/16	1-15/16	2-7/32	2-7/32	2-7/32	None	None	None
805-015	C17132	1-1/2	2-1/8	2-1/8	2-1/8	2-1/2	2-1/2	2-1/2	None	None	None
805-020	C20132	2	2-1/2	2-1/2	2-1/2	3	3	3	None	None	None
805-025	C27132	2-1/2	3-23/32	3-23/32	3-23/32	3-9/16	3-9/16	3-9/16	None	None	None
805-030	C30132	3	4-5/32	4-5/32	4-5/32	4-5/16	4-5/16	4-5/16	None	None	None
805-040	C40132	4	4-13/16	4-13/16	4-13/16	5-7/16	5-7/16	5-7/16	None	None	None

90° ELBOW
Soc x Soc

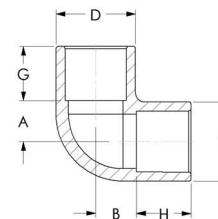


UNIV.#	PART#	SIZE	A	B	C	D	E	F	G	H	J
806-002	C03100	1/4	11/32	11/32	None	13/16	13/16	None	21/32	21/32	None
806-003	C05100	3/8	7/16	7/16	None	31/32	31/32	None	25/32	25/32	None
806-005	C07100	1/2	9/16	9/16	None	1-7/32	1-7/32	None	29/32	29/32	None
806-007	C08100	3/4	5/8	5/8	None	1-7/16	1-7/16	None	1-1/32	1-1/32	None
806-010	C10100	1	3/4	3/4	None	1-3/4	1-3/4	None	1-5/32	1-5/32	None
806-012	C14100	1-1/4	15/16	15/16	None	2-1/8	2-1/8	None	1-5/16	1-5/16	None
806-015	C17100	1-1/2	1-1/16	1-1/16	None	2-13/32	2-13/32	None	1-7/16	1-7/16	None
806-020	C20100	2	1-5/16	1-5/16	None	2-29/32	2-29/32	None	1-9/16	1-9/16	None
806-025	C27100	2-1/2	1-17/32	1-17/32	None	3-17/32	3-17/32	None	1-27/32	1-27/32	None



90° ELBOW

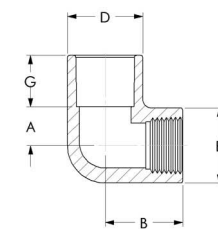
Soc x Soc (continued)



UNIV.#	PART#	SIZE	A	B	C	D	E	F	G	H	J
806-030	C30100	3	1-13/16	1-13/16	None	4-7/32	4-7/32	None	1-15/16	1-15/16	None
806-040	C40100	4	2-11/32	2-11/32	None	5-5/16	5-5/16	None	2-5/16	2-5/16	None
806-060	C60100	6	3-9/16	3-9/16	None	7-9/16	7-9/16	None	3-1/16	3-1/16	None
806-080	C80100	8	4-9/16	4-9/16	None	9-23/32	9-23/32	None	4-1/32	4-1/32	None
806-100	806-100	10	5-3/4	5-3/4	None	12-1/16	12-1/16	None	5-1/2	5-1/2	None
806-120	806-120	12	6-15/16	6-15/16	None	14-1/4	14-1/4	None	6-1/2	6-1/2	None

90° ELBOW

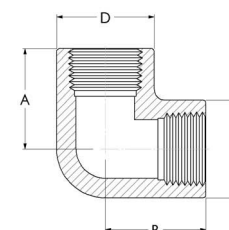
Soc x FPT



UNIV.#	PART#	SIZE	A	B	C	D	E	F	G	H	J
807-005	C07106	1/2	17/32	1-5/8	None	1-5/16	1-5/16	None	1-1/16	None	None
807-007	C08107	3/4	9/16	1-3/4	None	1-17/32	1-17/32	None	1-5/32	None	None
807-010	C10108	1	3/4	1-3/8	None	1-27/32	1-27/32	None	1-11/32	None	None
807-012	C14107	1-1/4	29/32	2-11/32	None	2-7/32	2-7/32	None	1-13/32	None	None
807-015	C17107	1-1/2	1-1/16	2-11/16	None	2-17/32	2-17/32	None	1-5/8	None	None
807-020	C20107	2	1-9/32	3-1/16	None	3	3	None	1-3/4	None	None

90° ELBOW

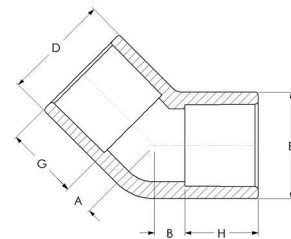
FPT x FPT



UNIV.#	PART#	SIZE	A	B	C	D	E	F	G	H	J
808-002	C03102	1/4	15/16	15/16	None	7/8	7/8	None	None	None	None
808-003	C05102	3/8	1-1/32	1-1/32	None	1-1/16	1-1/16	None	None	None	None
808-005	C07102	1/2	1-1/4	1-1/4	None	1-5/16	1-5/16	None	None	None	None
808-007	C08102	3/4	1-3/8	1-3/8	None	1-1/2	1-1/2	None	None	None	None
808-010	C10102	1	1-23/32	1-23/32	None	1-13/16	1-13/16	None	None	None	None
808-012	C14102	1-1/4	1-29/32	1-29/32	None	2-7/32	2-7/32	None	None	None	None
808-015	C17102	1-1/2	2-3/32	2-3/32	None	2-17/32	2-17/32	None	None	None	None
808-020	C20102	2	2-7/16	2-7/16	None	3	3	None	None	None	None
808-025	C27102	2-1/2	3-23/32	3-23/32	None	3-9/16	3-9/16	None	None	None	None
808-030	C30102	3	4-5/32	4-5/32	None	4-5/16	4-5/16	None	None	None	None
808-040	C40102	4	4-13/16	4-13/16	None	5-3/8	5-3/8	None	None	None	None

45° ELBOW

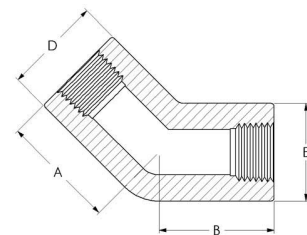
Soc x Soc



UNIV.#	PART#	SIZE	A	B	C	D	E	F	G	H	J
817-002	C03110	1/4	5/32	5/32	None	7/8	7/8	None	21/32	21/32	None
817-003	C05110	3/8	3/16	3/16	None	1	1	None	25/32	25/32	None
817-005	C07110	1/2	9/16	9/16	None	1-1/16	1-1/16	None	1-5/16	1-5/16	None
817-007	C08110	3/4	5/8	5/8	None	1-3/32	1-3/32	None	1-1/2	1-1/2	None
817-010	C10110	1	3/4	3/4	None	1-11/32	1-11/32	None	1-13/16	1-13/16	None
817-012	C14110	1-1/4	15/16	15/16	None	2-7/32	2-7/32	None	1-7/16	1-7/16	None
817-015	C17110	1-1/2	1-1/16	1-1/16	None	2-17/32	2-17/32	None	1-5/8	1-5/8	None
817-020	C20110	2	1-5/16	1-5/16	None	3-1/32	3-1/32	None	1-23/32	1-23/32	None
817-025	C27110	2-1/2	3/4	3/4	None	3-1/2	3-1/2	None	1-13/16	1-13/16	None
817-030	C30110	3	13/16	13/16	None	4-7/32	4-7/32	None	1-15/16	1-15/16	None
817-040	C40110	4	1-1/16	1-1/16	None	5-5/16	5-5/16	None	2-5/16	2-5/16	None
817-060	C60110	6	3-9/16	3-9/16	None	7-19/32	7-19/32	None	3-9/16	3-9/16	None
817-080	C80110	8	4-9/16	4-9/16	None	9-3/4	9-3/4	None	4-1/16	4-1/16	None
817-100	817-100	10	2-9/16	2-9/16	None	12-1/16	12-1/16	None	5-1/2	5-1/2	None
817-120	817-120	12	3-1/16	3-1/16	None	14-1/4	14-1/4	None	6-1/2	6-1/2	None

45° ELBOW

FPT x FPT

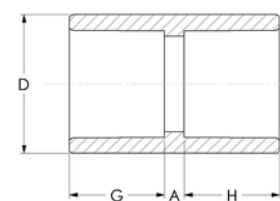


UNIV.#	PART#	SIZE	A	B	C	D	E	F	G	H	J
819-002	C03111	1/4	3/4	3/4	None	7/8	7/8	None	None	None	None
819-003	C05111	3/8	13/16	13/16	None	1	1	None	None	None	None
819-005	C07111	1/2	1-3/8	1-3/8	None	1-5/16	1-5/16	None	None	None	None
819-007	C08111	3/4	1-1/2	1-1/2	None	1-1/2	1-1/2	None	None	None	None
819-010	C10111	1	1-23/32	1-23/32	None	1-13/16	1-13/16	None	None	None	None
819-012	C14111	1-1/4	1-7/8	1-7/8	None	2-7/32	2-7/32	None	None	None	None
819-015	C17111	1-1/2	2-3/16	2-3/16	None	2-17/32	2-17/32	None	None	None	None
819-020	C20111	2	2-1/2	2-1/2	None	3	3	None	None	None	None
819-025	C27111	2-1/2	2-21/32	2-21/32	None	3-9/16	3-9/16	None	None	None	None
819-030	C30111	3	2-27/32	2-27/32	None	4-5/16	4-5/16	None	None	None	None
819-040	C40111	4	3-7/16	3-7/16	None	5-5/16	5-5/16	None	None	None	None



COUPLING

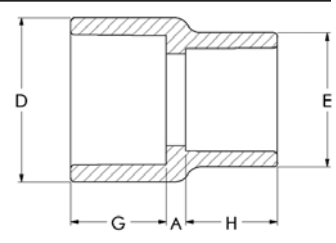
Soc x Soc



UNIV.#	PART#	SIZE	A	B	C	D	E	F	G	H	J
829-002	C03140	1/4	1/8	None	None	13/16	None	None	9/16	9/16	None
829-003	C05140	3/8	1/8	None	None	1	None	None	11/16	11/16	None
829-005	C07140	1/2	5/32	None	None	1-3/16	None	None	29/32	29/32	None
829-007	C08140	3/4	5/32	None	None	1-13/32	None	None	1-1/32	1-1/32	None
829-010	C10140	1	5/32	None	None	1-3/4	None	None	1-5/32	1-5/32	None
829-012	C14140	1-1/4	5/32	None	None	2-1/8	None	None	1-9/32	1-9/32	None
829-015	C17140	1-1/2	5/32	None	None	2-3/8	None	None	1-13/32	1-13/32	None
829-020	C20140	2	7/32	None	None	3-1/32	None	None	1-17/32	1-17/32	None
829-025	C27140	2-1/2	7/32	None	None	3-9/16	None	None	2-3/16	2-3/16	None
829-030	C30140	3	1/8	None	None	4-7/32	None	None	1-15/16	1-15/16	None
829-040	C40140	4	1/8	None	None	5-5/16	None	None	2-5/16	2-5/16	None
829-060	C60140	6	9/32	None	None	7-9/16	None	None	3-1/16	3-1/16	None
829-080	C80140	8	11/32	None	None	9-23/32	None	None	4-1/16	4-1/16	None
829-100	829-100	10	5/16	None	None	12-1/16	None	None	5-1/2	5-1/2	None
829-120	829-120	12	7/16	None	None	14-1/4	None	None	6-1/2	6-1/2	None

COUPLING-REDUCING

Soc x Reducing Soc

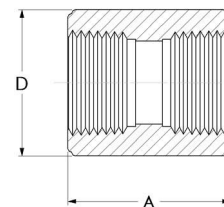


UNIV.#	PART#	SIZE	A	B	C	D	E	F	G	H	J
829-101	C08202	3/4 x 1/2	1/4	None	None	1-13/32	1-5/32	None	1	7/8	None
829-130	C10202	1 x 1/2	7/32	None	None	1-23/32	1-7/16	None	1-3/32	7/8	None
829-131	C10203	1 x 3/4	1/8	None	None	1-29/32	1-1/2	None	1-1/8	1-1/32	None
829-168	C14204	1-1/4 x 1	13/32	None	None	2-3/32	1-23/32	None	1-7/32	1-3/32	None
829-211	C17204	1-1/2 x 1	9/32	None	None	2-15/32	1-27/32	None	1-13/32	1-5/32	None
829-212	C17205	1-1/2 x 1-1/4	7/32	None	None	2-15/32	2-7/32	None	1-13/32	1-9/32	None
829-249	829-249	2 x 1	1/2	None	None	2-7/8	1-23/32	None	1-1/2	1-1/8	None
829-251	C20206	2 x 1-1/2	1/4	None	None	3-1/32	2-1/2	None	1-17/32	1-3/8	None
829-338	C30207	3 x 2	19/32	None	None	4-5/16	3-1/32	None	2-11/32	1-7/8	None
829-420	C40207	4 x 2	7/8	None	None	5-9/32	2-29/32	None	2-9/32	1-17/32	None
829-422	C40208	4 x 3	15/32	None	None	5-15/32	4-11/32	None	2-17/32	2-7/16	None
829-532	C60209	6 x 4	3-13/32	None	None	7-1/2	5-1/4	None	3-1/32	2-9/32	None
829-585	829-585	8 x 6	1-3/32	None	None	9-3/4	7-19/32	None	4-1/32	2-31/32	None



COUPLING

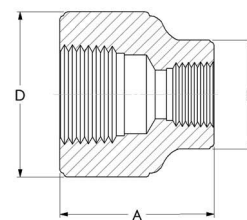
FPT x FPT



UNIV.#	PART#	SIZE	A	B	C	D	E	F	G	H	J
830-002	C03141	1/4	1-3/8	None	None	7/8	None	None	None	None	None
830-003	C05141	3/8	1-1/2	None	None	1	None	None	None	None	None
830-005	C07141	1/2	1-15/16	None	None	1-5/16	None	None	None	None	None
830-007	C08141	3/4	1-31/32	None	None	1-17/32	None	None	None	None	None
830-010	C10141	1	1	None	None	1-27/32	None	None	None	None	None
830-012	C14141	1-1/4	2-11/16	None	None	2-7/32	None	None	None	None	None
830-015	C17141	1-1/2	2-15/16	None	None	2-15/32	None	None	None	None	None
830-020	C20141	2	3-1/4	None	None	3-1/32	None	None	None	None	None
830-025	C27141	2-1/2	4-9/16	None	None	3-9/16	None	None	None	None	None
830-030	C30141	3	4-29/32	None	None	4-11/32	None	None	None	None	None
830-040	C40141	4	5-1/4	None	None	5-7/16	None	None	None	None	None
830-060	C60141	6	3-3/8	None	None	7-19/32	None	None	None	None	None

COUPLING-REDUCING

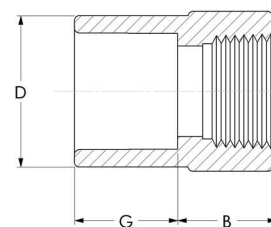
FPT x Reducing FPT



UNIV.#	PART#	SIZE	A	B	C	D	E	F	G	H	J
830-072	C07171	1/2 x 1/4	1-15/32	None	None	1-9/32	29/32	None	None	None	None
830-101	C08175	3/4 x 1/2	2-3/8	None	None	1-19/32	1-5/16	None	None	None	None
830-130	C10175	1 x 1/2	2-23/32	None	None	1-29/32	1-5/16	None	None	None	None
830-131	C10177	1 x 3/4	2-5/16	None	None	1-13/16	1-1/2	None	None	None	None
830-167	C14173	1-1/4 x 3/4	3-1/32	None	None	2-9/32	1-17/32	None	None	None	None
830-211	C17175	1-1/2 x 1	2-13/16	None	None	2-15/32	1-27/32	None	None	None	None
830-251	C20177	2 x 1-1/2	3-7/16	None	None	3-3/32	2-17/32	None	None	None	None

FEMALE ADAPTER

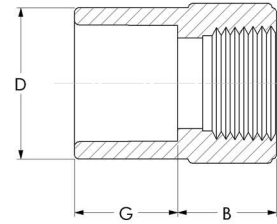
Soc x FPT



UNIV.#	PART#	SIZE	A	B	C	D	E	F	G	H	J
835-002	C03151	1/4	None	23/32	None	27/32	None	None	21/32	None	None
835-003	C05151	3/8	None	23/32	None	1	None	None	3/4	None	None
835-005	C07151	1/2	None	15/16	None	1-5/16	None	None	29/32	None	None
835-007	C08151	3/4	None	15/16	None	1-17/32	None	None	1-1/32	None	None
835-010	C10151	1	None	1-1/8	None	1-27/32	None	None	1-5/32	None	None
835-012	C14151	1-1/4	None	1-1/32	None	2-1/8	None	None	1-5/16	None	None
835-015	C17151	1-1/2	None	1-1/32	None	2-13/32	None	None	1-7/16	None	None

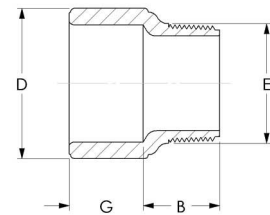


FEMALE ADAPTER
Soc x FPT (continued)



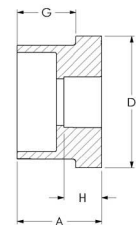
UNIV.#	PART#	SIZE	A	B	C	D	E	F	G	H	J
835-020	C20151	2	None	1-5/32	None	2-29/32	None	None	1-9/16	None	None
835-025	C27151	2-1/2	None	2-3/8	None	3-9/16	None	None	2-3/16	None	None
835-030	C30151	3	None	2-9/16	None	4-5/16	None	None	2-11/32	None	None
835-040	C40151	4	None	2-23/32	None	5-15/32	None	None	2-17/32	None	None
835-060	C60151	6	None	1-29/32	None	7-21/32	None	None	3	None	None

MALE ADAPTER
Soc x MPT



UNIV.#	PART#	SIZE	A	B	C	D	E	F	G	H	J
836-005	C07150	1/2	None	1-1/8	None	1-7/32	7/8	None	29/32	None	None
836-007	C08150	3/4	None	1-1/8	None	1-7/16	1-1/16	None	1-1/32	None	None
836-010	C10150	1	None	1-9/32	None	1-3/4	1-3/8	None	1-5/32	None	None
836-012	C14150	1-1/4	None	1-7/32	None	2-1/8	1-5/8	None	1-5/16	None	None
836-015	C17150	1-1/2	None	1-9/32	None	2-13/32	1-7/8	None	1-7/16	None	None
836-020	C20150	2	None	1-1/4	None	2-29/32	2-11/32	None	1-17/32	None	None
836-025	C27150	2-1/2	None	1-17/32	None	3-1/2	2-27/32	None	1-29/32	None	None
836-030	C30150	3	None	1-23/32	None	4-3/16	3-7/16	None	1-15/16	None	None
836-040	C40150	4	None	1-3/4	None	5-5/16	4-7/16	None	2-5/16	None	None
836-060	C60150	6	None	2-13/32	None	7-9/16	6-11/16	None	3-1/16	None	None

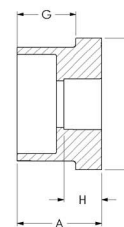
REDUCING BUSHING
Spigot x Reducing Soc



UNIV.#	PART#	SIZE	A	B	C	D	E	F	G	H	J
837-072	C07230	1/2 x 1/4	1-3/32	None	None	1	None	None	7/8	5/8	None
837-073	C07232	1/2 x 3/8	1-1/16	None	None	29/32	None	None	7/8	13/16	None
837-101	C08234	3/4 x 1/2	1-7/32	None	None	1-1/8	None	None	1-1/32	7/8	None
837-130	C10232	1 x 1/2	1-7/16	None	None	1-3/8	None	None	1-3/16	7/8	None
837-131	C10234	1 x 3/4	1-7/16	None	None	1-3/8	None	None	1-3/16	1-1/32	None
837-166	C14230	1-1/4 x 1/2	1-9/16	None	None	1-23/32	None	None	1-1/4	7/8	None
837-167	C14232	1-1/4 x 3/4	1-9/16	None	None	1-11/16	None	None	1-9/32	1	None
837-168	C14234	1-1/4 x 1	1-9/16	None	None	1-11/16	None	None	1-1/4	1-5/32	None
837-209	C17230	1-1/2 x 1/2	1-3/4	None	None	2	None	None	1-13/32	29/32	None
837-210	C17232	1-1/2 x 3/4	1-3/4	None	None	2	None	None	1-13/32	1-1/32	None

REDUCING BUSHING

Spigot x Reducing Soc (continued)

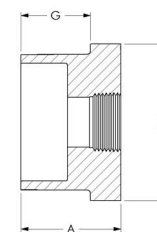


UNIV.#	PART#	SIZE	A	B	C	D	E	F	G	H	J
837-211	C17234	1-1/2 x 1	1-3/4	None	None	2	None	None	1-13/32	1-5/32	None
837-212	C17236	1-1/2 x 1-1/4	1-3/4	None	None	2	None	None	1-7/16	1-1/4	None
837-247	C20230	2 x 1/2	1-3/4	None	None	2-13/32	None	None	1-17/32	29/32	None
837-248	C20232	2 x 3/4	1-13/16	None	None	2-13/32	None	None	1-17/32	1-1/32	None
837-249	C20234	2 x 1	1-13/16	None	None	2-13/32	None	None	1-17/32	1-1/8	None
837-250	C20236	2 x 1-1/4	1-13/16	None	None	2-13/32	None	None	1-17/32	1-1/4	None
837-251	C20238	2 x 1-1/2	1-13/16	None	None	2-13/32	None	None	1-17/32	1-13/32	None
837-289	C27230	2-1/2 x 1	1-13/16	None	None	2-11/32	None	None	2-7/32	1-1/8	None
837-290	C27232	2-1/2 x 1-1/4	2-15/32	None	None	2-31/32	None	None	1-13/16	1-5/16	None
837-291	C27234	2-1/2 x 1-1/2	2-1/8	None	None	2-31/32	None	None	1-27/32	1-7/16	None
837-292	C27236	2-1/2 x 2	2-1/8	None	None	3-5/16	None	None	2-7/32	1-17/32	None
837-335	837-335	3 x 1	2-1/2	None	None	3-19/32	None	None	1-31/32	1-5/32	None
837-336	C30234	3 x 1-1/4	2-1/4	None	None	3-19/32	None	None	1-31/32	1-5/16	None
837-337	C30236	3 x 1-1/2	2-1/4	None	None	3-19/32	None	None	1-31/32	1-7/16	None
837-338	C30238	3 x 2	2-1/4	None	None	3-19/32	None	None	1-31/32	1-9/16	None
837-339	C30240	3 x 2-1/2	2-1/4	None	None	3-19/32	None	None	1-31/32	1-23/32	None
837-420	C40236	4 x 2	2-5/8	None	None	4-9/16	None	None	2-5/16	1-9/16	None
837-422	C40240	4 x 3	2-5/8	None	None	4-9/16	None	None	2-5/16	1-15/16	None
837-528	C60226	6 x 2	3-15/32	None	None	6-3/4	None	None	3-1/32	1-9/16	None
837-530	C60228	6 x 3	3-15/32	None	None	6-3/4	None	None	3-1/32	2-1/32	None
837-532	C60230	6 x 4	3-15/32	None	None	6-3/4	None	None	3	2-5/16	None
837-585	C80232	8 x 6	4-19/32	None	None	8-3/4	None	None	4-1/8	3-1/16	None
837-628	837-628	10 x 8*									
837-670	837-670	12 x 10*									

* Call Customer Service for dimension details.

REDUCING BUSHING

Spigot x Reducing FPT

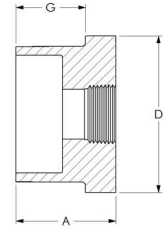


UNIV.#	PART#	SIZE	A	B	C	D	E	F	G	H	J
838-052	C05231	3/8 x 1/4	31/32	None	None	13/16	None	None	3/4	None	None
838-071	C07229	1/2 x 1/8	31/32	None	None	15/16	None	None	25/32	None	None
838-072	C07231	1/2 x 1/4	31/32	None	None	15/16	None	None	25/32	None	None
838-073	C07233	1/2 x 3/8	1-1/8	None	None	1	None	None	7/8	None	None
838-098	C08231	3/4 x 1/4	1-7/32	None	None	1-7/32	None	None	1/2	None	None
838-101	C08235	3/4 x 1/2	1-1/4	None	None	1-1/8	None	None	1-1/32	None	None
838-129	C10231	1 x 3/8	1-13/32	None	None	1-1/2	None	None	13/16	None	None
838-130	C10233	1 x 1/2	1-3/8	None	None	1-3/8	None	None	1-5/32	None	None
838-131	C10235	1 x 3/4	1-3/8	None	None	1-3/8	None	None	1-5/32	None	None
838-166	C14231	1-1/4 x 1/2	1-9/16	None	None	1-23/32	None	None	1-1/4	None	None
838-167	C14233	1-1/4 x 3/4	1-1/2	None	None	1-3/4	None	None	1-9/32	None	None
838-168	C14235	1-1/4 x 1	1-9/16	None	None	1-11/16	None	None	1-9/32	None	None
838-209	C17231	1-1/2 x 1/2	1-3/4	None	None	2	None	None	1-13/32	None	None
838-210	C17233	1-1/2 x 3/4	1-5/8	None	None	1-31/32	None	None	1-7/16	None	None



REDUCING BUSHING

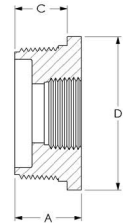
Spigot x Reducing FPT (continued)



UNIV.#	PART#	SIZE	A	B	C	D	E	F	G	H	J
838-211	C17235	1-1/2 x 1	1-5/8	None	None	1-31/32	None	None	1-7/16	None	None
838-212	C17237	1-1/2 x 1-1/4	1-3/4	None	None	2	None	None	1-13/32	None	None
838-247	C20231	2 x 1/2	1-27/32	None	None	2-13/32	None	None	1-17/32	None	None
838-248	C20233	2 x 3/4	1-3/4	None	None	2-7/16	None	None	1-9/16	None	None
838-249	C20235	2 x 1	1-3/4	None	None	2-7/16	None	None	1-9/16	None	None
838-250	C20237	2 x 1-1/4	1-3/4	None	None	2-7/16	None	None	1-9/16	None	None
838-251	C20239	2 x 1-1/2	1-3/4	None	None	2-7/16	None	None	1-9/16	None	None
838-289	C27231	2-1/2 x 1	2-3/32	None	None	2-31/32	None	None	1-27/32	None	None
838-291	C27235	2-1/2 x 1-1/2	2-3/32	None	None	2-31/32	None	None	1-27/32	None	None
838-292	C27237	2-1/2 x 2	2-3/32	None	None	2-31/32	None	None	1-27/32	None	None
838-335	C30233	3 x 1	2-1/4	None	None	3-19/32	None	None	1-31/32	None	None
838-337	C30237	3 x 1-1/2	2-1/4	None	None	3-19/32	None	None	1-31/32	None	None
838-338	C30239	3 x 2	2-1/4	None	None	3-19/32	None	None	1-31/32	None	None
838-339	C30241	3 x 2-1/2	2-1/4	None	None	3-19/32	None	None	1-31/32	None	None
838-420	C40237	4 x 2	2-21/32	None	None	4-19/32	None	None	2-11/32	None	None
838-422	C40241	4 x 3	2-21/32	None	None	4-19/32	None	None	2-11/32	None	None
838-532	C60231	6 x 4	3-7/16	None	None	6-11/16	None	None	3-1/32	None	None

REDUCING BUSHING

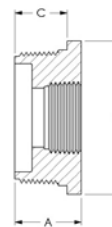
MPT x Reducing FPT



UNIV.#	PART#	SIZE	A	B	C	D	E	F	G	H	J
839-052	C05221	3/8 x 1/4	13/16	None	5/8	13/16	None	None	None	None	None
839-072	C07221	1/2 x 1/4	15/16	None	3/4	1	None	None	None	None	None
839-073	C07222	1/2 x 3/8	15/16	None	3/4	1	None	None	None	None	None
839-098	C08220	3/4 x 1/4	1	None	25/32	1-3/16	None	None	None	None	None
839-101	C08222	3/4 x 1/2	1-1/32	None	27/32	1-1/8	None	None	None	None	None
839-128	C10220	1 x 1/4	1-7/32	None	1/4	1-5/8	None	None	None	None	None
839-129	C10221	1 x 3/8	1-7/32	None	31/32	1-17/32	None	None	None	None	None
839-130	C10222	1 x 1/2	1-7/32	None	31/32	1-11/32	None	None	None	None	None
839-131	C10223	1 x 3/4	1-7/32	None	31/32	1-11/32	None	None	None	None	None
839-166	C14220	1-1/4 x 1/2	1-1/4	None	1	1-11/16	None	None	None	None	None
839-167	C14221	1-1/4 x 3/4	1-1/4	None	1	1-11/16	None	None	None	None	None
839-168	C14222	1-1/4 x 1	1-1/4	None	1	1-11/16	None	None	None	None	None
839-209	C17220	1-1/2 x 1/2	1-11/32	None	1	1-29/32	None	None	None	None	None
839-210	C17221	1-1/2 x 3/4	1-11/32	None	1	1-15/16	None	None	None	None	None
839-211	C17222	1-1/2 x 1	1-11/32	None	1	1-29/32	None	None	None	None	None
839-212	C17223	1-1/2 x 1-1/4	1-11/32	None	1-1/32	1-29/32	None	None	None	None	None
839-247	C20220	2 x 1/2	1-3/8	None	1-1/16	2-13/32	None	None	None	None	None
839-248	C20221	2 x 3/4	1-13/32	None	1-1/16	2-13/32	None	None	None	None	None
839-249	C20222	2 x 1	1-13/32	None	1-1/16	2-13/32	None	None	None	None	None
839-250	C20223	2 x 1-1/4	1-13/32	None	1-1/16	2-13/32	None	None	None	None	None
839-251	C20224	2 x 1-1/2	1-13/32	None	1-3/32	2-13/32	None	None	None	None	None
839-290	C27221	2-1/2 x 1-1/4	1-3/8	None	2	3-9/32	None	None	None	None	None

REDUCING BUSHING

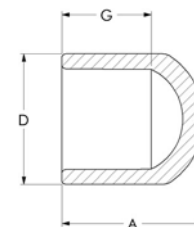
MPT x Reducing FPT (continued)



UNIV.#	PART#	SIZE	A	B	C	D	E	F	G	H	J
839-291	C27222	2-1/2 x 1-1/2	2-1/2	None	2-3/16	3-5/16	None	None	None	None	None
839-292	C27223	2-1/2 x 2	1-9/32	None	2-7/32	3-5/16	None	None	None	None	None
839-337	C30219	3 x 1-1/2	2-5/8	None	2-3/8	4	None	None	None	None	None
839-338	C30220	3 x 2	2-5/8	None	2-3/8	4-1/32	None	None	None	None	None
839-339	C30221	3 x 2-1/2	2-5/8	None	2-3/8	4-1/32	None	None	None	None	None
839-420	C40219	4 x 2	2-25/32	None	2-17/32	4-15/16	None	None	None	None	None
839-422	C40220	4 x 3	2-25/32	None	2-15/32	4-15/16	None	None	None	None	None

CAP*

Soc

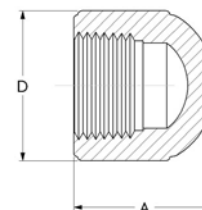


UNIV.#	PART#	SIZE	A	B	C	D	E	F	G	H	J
847-002	C03260	1/4	15/16	None	None	13/16	None	None	21/32	None	None
847-003	C05260	3/8	1-1/8	None	None	1	None	None	3/4	None	None
847-005	C07260	1/2	1-3/8	None	None	1-3/16	None	None	31/32	None	None
847-007	C08260	3/4	1-19/32	None	None	1-13/32	None	None	1-1/16	None	None
847-010	C10260	1	1-25/32	None	None	1-3/4	None	None	1-5/32	None	None
847-012	C14260	1-1/4	1-31/32	None	None	2-1/8	None	None	1-11/32	None	None
847-015	C17260	1-1/2	2-7/32	None	None	2-3/8	None	None	1-1/2	None	None
847-020	C20260	2	2-11/16	None	None	3-1/32	None	None	1-11/16	None	None
847-025	C27260	2-1/2	3-11/32	None	None	3-9/16	None	None	2-9/32	None	None
847-030	C30260	3	3-7/16	None	None	4-5/16	None	None	2-3/16	None	None
847-040	C40260	4	3-23/32	None	None	5-15/32	None	None	2-17/32	None	None
847-060	C60260	6	5-19/32	None	None	7-21/32	None	None	3-21/32	None	None
847-080	C80260	8	7-1/16	None	None	9-3/4	None	None	4-1/16	None	None

* Note: If using for water filter assembly, contact customer service for pertinent information.

CAP*

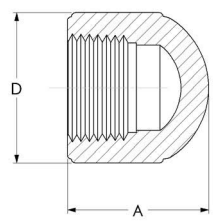
FPT



UNIV.#	PART#	SIZE	A	B	C	D	E	F	G	H	J
848-002	C03261	1/4	7/8	None	None	13/16	None	None	None	None	None
848-003	C05261	3/8	1	None	None	1	None	None	None	None	None
848-005	C07261	1/2	1-1/4	None	None	1-5/16	None	None	None	None	None
848-007	C08261	3/4	1-11/16	None	None	1-17/32	None	None	None	None	None
848-010	C10261	1	1-17/32	None	None	1-27/32	None	None	None	None	None
848-012	C14261	1-1/4	2-1/8	None	None	2-7/32	None	None	None	None	None
848-015	C17261	1-1/2	2-9/32	None	None	2-15/32	None	None	None	None	None



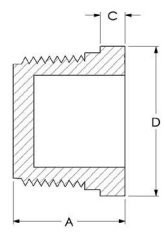
CAP*
FPT (continued)



UNIV.#	PART#	SIZE	A	B	C	D	E	F	G	H	J
848-020	C20261	2	1-15/16	None	None	3-1/32	None	None	None	None	None
848-025	C27261	2-1/2	3-11/32	None	None	3-9/16	None	None	None	None	None
848-030	C30261	3	3-7/16	None	None	4-5/16	None	None	None	None	None
848-040	C40261	4	3-11/16	None	None	5-7/16	None	None	None	None	None

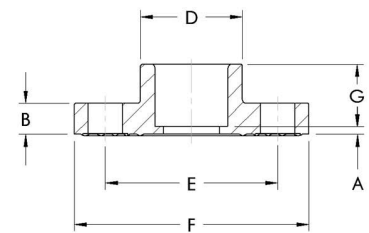
* Note: If using for water filter assembly, contact customer service for pertinent information.

PLUG
MPT



UNIV.#	PART#	SIZE	A	B	C	D	E	F	G	H	J
850-002	C03251	1/4	13/16	None	19/32	11/16	None	None	None	None	None
850-003	C05251	3/8	13/32	None	11/16	13/32	None	None	None	None	None
850-005	C07251	1/2	1	None	25/32	29/32	None	None	None	None	None
850-007	C08251	3/4	1-1/32	None	27/32	1-1/8	None	None	None	None	None
850-010	C10251	1	1-7/32	None	31/32	1-11/32	None	None	None	None	None
850-012	C14251	1-1/4	1-1/4	None	1	1-11/16	None	None	None	None	None
850-015	C17251	1-1/2	1-11/32	None	1-1/32	1-29/32	None	None	None	None	None
850-020	C20251	2	1-7/16	None	1-1/16	2-13/32	None	None	None	None	None
850-025	C27251	2-1/2	2-1/32	None	1-5/8	2-31/32	None	None	None	None	None
850-030	C30251	3	2-11/16	None	2-3/8	4	None	None	None	None	None
850-040	C40251	4	2-13/16	None	2-9/16	4-15/16	None	None	None	None	None

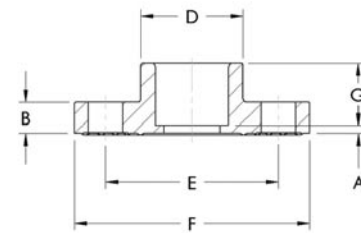
FLANGE COMPANION
Soc



UNIV.#	PART#	SIZE	A	B	C	D	E	F	G	H	J
851-005	C07270	1/2	3/16	7/16	None	1-5/16	2-3/8	3-1/2	29/32	None	None
851-007	C08270	3/4	5/32	17/32	None	1-17/32	2-3/4	3-7/8	1-5/16	None	None
851-010	C10270	1	5/32	19/32	None	1-27/32	3-1/8	4-1/4	1-5/32	None	None
851-012	C14270	1-1/4	5/32	5/8	None	2-7/32	3-1/2	4-5/8	1-9/32	None	None
851-015	C17270	1-1/2	5/32	23/32	None	2-1/2	3-7/8	5	1-3/8	None	None
851-020	C20270	2	7/32	25/32	None	3	4-3/4	6	1-17/32	None	None
851-025	C27270	2-1/2	7/32	7/8	None	3-9/16	5-1/2	7	1-25/32	None	None
851-030	C30270	3	7/32	31/32	None	4-5/16	6	7-1/2	1-7/8	None	None
851-040	C40270	4	5/16	1-1/16	None	5-17/32	7-1/2	9-1/16	2-9/32	None	None
851-060	C60270	6	7/32	1-1/16	None	7-23/32	9-1/2	11-1/32	3	None	None

FLANGE COMPANION

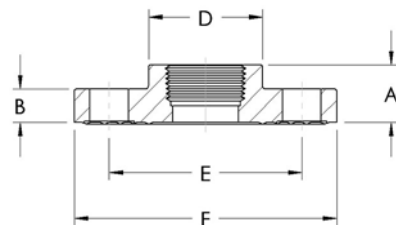
Soc (continued)



UNIV.#	PART#	SIZE	A	B	C	D	E	F	G	H	J
851-080	C80270	8	1/4	1-9/32	None	9-25/32	11-3/4	13-1/2	4	None	None
851-100	C110270	10	1/4	1-7/32	None	11-19/32	14-1/4	16-3/32	6-1/4	None	None
851-120	C120270	12	1/4	1-7/32	None	13-19/32	17	19	6-1/4	None	None

FLANGE COMPANION

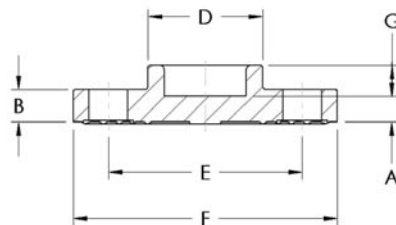
FPT



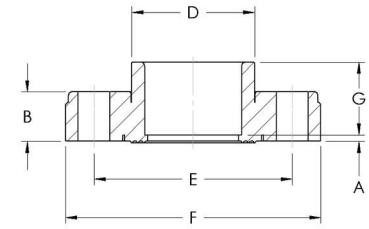
UNIV.#	PART#	SIZE	A	B	C	D	E	F	G	H	J
852-005	C07271	1/2	1-1/16	7/16	None	1-5/16	2-3/8	3-1/2	None	None	None
852-007	C08271	3/4	1-15/32	17/32	None	1-17/32	2-3/4	3-7/8	None	None	None
852-010	C10271	1	1-5/16	19/32	None	1-27/32	3-1/8	4-1/4	None	None	None
852-012	C14271	1-1/4	1-13/32	5/8	None	2-7/32	3-1/2	4-5/8	None	None	None
852-015	C17271	1-1/2	1-17/32	23/32	None	2-1/2	3-7/8	5	None	None	None
852-020	C20271	2	1-23/32	25/32	None	3	4-3/4	6	None	None	None
852-025	C27271	2-1/2	1-31/32	7/8	None	3-9/16	5-1/2	7	None	None	None
852-030	C30271	3	2-3/32	31/32	None	4-5/16	6	7-1/2	None	None	None
852-040	C40271	4	1-9/32	1-1/16	None	5-17/32	7-1/2	9-1/16	None	None	None
852-060	C60271	6	1-21/32	1-1/16	None	7-23/32	9-1/2	11-1/32	None	None	None

FLANGE BLIND

Soc



UNIV.#	PART#	SIZE	A	B	C	D	E	F	G	H	J
853-005	C07272	1/2	9/32	15/32	None	1-5/16	2-3/8	3-1/2	15/32	None	None
853-007	C08272	3/4	9/32	1/2	None	1-17/32	2-3/4	3-7/8	1/2	None	None
853-010	C10272	1	9/32	9/16	None	1-27/32	3-1/8	4-1/4	7/16	None	None
853-012	C14272	1-1/4	1/2	21/32	None	2-1/4	3-1/2	4-5/8	13/32	None	None
853-015	C17272	1-1/2	7/16	23/32	None	2-1/2	3-7/8	5	15/32	None	None
853-020	C20272	2	1/2	25/32	None	3	4-3/4	6	7/16	None	None
853-025	C27272	2-1/2	1/2	13/16	None	3-19/32	5-1/2	7	19/32	None	None
853-030	C30272	3	25/32	15/16	None	4-5/16	6	7-1/2	13/32	None	None
853-040	C40272	4	21/32	1-1/16	None	5-1/2	7-1/2	9-1/16	1/2	None	None
853-060	C60272	6	13/16	1-1/32	None	7-11/16	9-1/2	11-1/32	3/4	None	None
853-080	C80272	8	11/16	1-9/32	None	9-13/16	11-3/4	13-1/2	13/16	None	None
853-110	853-110	10	1	1-7/32	None	11-15/32	14-1/4	16	1-19/32	None	None
853-120	853-120	12	1	1-7/32	None	13-19/32	17	19	1-19/32	None	None

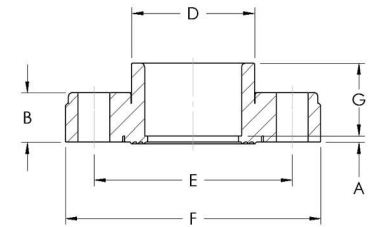


FLANGE VAN STONE STYLE WITH HEAVY DUTY REINFORCED RING*

Soc

UNIV.#	PART#	SIZE	A	B	C	D	E	F	G	H	J
854-030HD	C30273	3	5/16	1-11/32	None	4-3/16	6	7-5/8	2-1/8	None	None
854-040HD	C40273	4	7/16	1-3/8	None	5-1/4	7-1/2	9-1/8	2-1/4	None	None
854-060HD	C60273	6	13/32	1-5/8	None	7-19/32	9-1/2	11-1/32	3-3/16	None	None
854-080HD	C80273	8	3/8	2-1/16	None	9-23/32	11-3/4	13-9/16	4-1/8	None	None
854-100HD	C100273	10	3/8	2-1/2	None	12	14-1/4	16-1/4	5-1/2	None	None
854-120HD	C120273	12	15/32	2-1/2	None	14-5/16	17	19-3/8	6-9/16	None	None

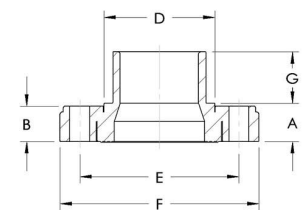
* Fiberglass-filled PVC ring.



FLANGE VAN STONE STYLE LOOSE RING

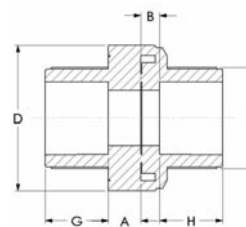
Soc

UNIV.#	PART#	SIZE	A	B	C	D	E	F	G	H	J
854-015	C17274	1-1/2	1/8	31/32	None	2-1/2	3-7/8	5	1-7/16	None	None
854-020	C20274	2	1/8	1-1/16	None	3	4-3/4	6	1-9/16	None	None
854-025	C27274	2-1/2	3/16	1-3/16	None	3-9/16	5-1/2	7	1-13/16	None	None
854-030	C30274	3	5/16	1-11/32	None	4-3/16	6	7-5/8	2-1/8	None	None
854-040	C40274	4	7/16	1-3/8	None	5-1/4	7-1/2	9-1/8	2-1/4	None	None
854-060	C60274	6	13/32	1-5/8	None	7-19/32	9-1/2	11-1/32	3-3/16	None	None
854-080	C80274	8	3/8	2-1/16	None	9-23/32	11-3/4	13-9/16	4-1/8	None	None
854-100	C100274	10	3/8	2-1/2	None	12	14-1/4	16-1/4	5-1/2	None	None
854-120	C120274	12	15/32	2-1/2	None	14-5/16	17	19-3/8	6-9/16	None	None



**SPIGOT FLANGE
VAN STONE STYLE LOOSE RING**

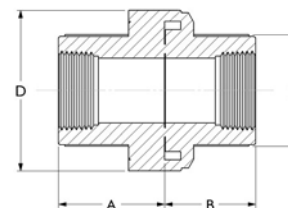
UNIV.#	PART#	SIZE	A	B	C	D	E	F	G	H	J
856-030	C30275	3	1-1/2	1-11/32	None	4-3/16	6	7-5/8	1-7/8	None	None
856-040	C40275	4	1-17/32	1-3/8	None	5-3/8	7-1/2	9-1/8	2-1/4	None	None
856-060	C60275	6	1-29/32	1-5/8	None	7-19/32	9-1/2	11-1/32	3-3/16	None	None
856-080	C80276	8	2-1/4	2-1/16	None	9-3/4	11-3/4	13-9/16	4-1/8	None	None


UNION

Soc x Soc with O-ring made of Viton®

UNIV.#	PART#	SIZE	A	B	C	D	E	F	G	H	J
857-005	C07286	1/2	15/32	1/8	None	2	1-9/32	None	3/4	3/4	None
857-007	C08286	3/4	3/4	17/32	None	2-9/32	1-1/2	None	13/16	13/16	None
857-010	C10286	1	19/32	11/32	None	2-21/32	1-27/32	None	1-5/32	1-5/32	None
857-012	C14286	1-1/4	11/16	11/32	None	3-3/32	2-5/32	None	1-9/32	1-9/32	None
857-015	C17286	1-1/2	23/32	15/32	None	3-3/8	2-21/32	None	1-13/32	1-13/32	None
857-020	C20286	2	3/4	1/4	None	4-1/16	3	None	1-17/32	1-17/32	None
857-025	C27286	2-1/2	1-15/16	1/2	None	5-17/32	3-5/8	None	1-3/4	1-3/4	None
857-030	C30286	3	5/8	11/32	None	6-1/4	4-7/16	None	1-29/32	1-29/32	None

Note: Soc x Soc and Thread x Thread are now interchangeable to Soc x Thread. These unions are now available with EPDM O-rings. Contact customer service for details.


UNION

FPT x FPT with O-ring made of Viton®

UNIV.#	PART#	SIZE	A	B	C	D	E	F	G	H	J
858-005	C07285	1/2	1-7/32	7/8	None	2	1-9/32	None	None	None	None
858-007	C08285	3/4	1-9/16	1-11/32	None	2-9/32	1-1/2	None	None	None	None
858-010	C10285	1	1-3/4	1-1/2	None	2-21/32	1-27/32	None	None	None	None
858-012	C14285	1-1/4	1-31/32	1-5/8	None	3-3/32	2-5/32	None	None	None	None
858-015	C17285	1-1/2	2-1/8	1-7/8	None	3-3/8	2-21/32	None	None	None	None
858-020	C20285	2	2-9/32	1-25/32	None	4-1/16	3	None	None	None	None
858-030	C30285	3	2-7/32	2-1/4	None	6-1/4	4-7/16	None	None	None	None

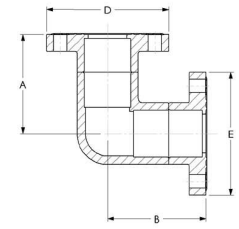
Note: Soc x Soc and Thread x Thread are now interchangeable to Soc x Thread. These unions are now available with EPDM O-rings. Contact customer service for details.

FPT STAINLESS STEEL END PIECE FOR SCH 80 UNIONS (316 STAINLESS STEEL)

PART#	SIZE	
C07284SS	1/2	For proper transition from metal to plastic. Order appropriately sized union separately.
C08284SS	3/4	Please refer to page 32 (Method 4) for details on transition installations.
C10284SS	1	
C14284SS	1-1/4	
C17284SS	1-1/2	
C20284SS	2	

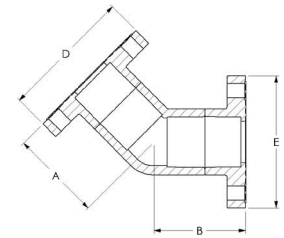


90° ELBOW
Flange x Flange



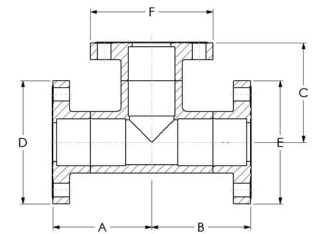
UNIV.#	PART#	SIZE	A	B	C	D	E	F	G	H	J
806-010FL	C10109	1	3-7/32	3-7/32	None	4-1/4	4-1/4	None	None	None	None
806-012FL	C14109	1-1/4	3-21/32	3-21/32	None	4-5/8	4-5/8	None	None	None	None
806-015FL	C17109	1-1/2	4-1/32	4-1/32	None	5	5	None	None	None	None
806-020FL	C20109	2	4-19/32	4-19/32	None	6	6	None	None	None	None
806-025FL	C27109	2-1/2	5-11/32	5-11/32	None	7	7	None	None	None	None
806-030FL	C30109	3	5-27/32	5-27/32	None	7-1/2	7-1/2	None	None	None	None
806-040FL	C40109	4	7-1/4	7-1/4	None	9-1/16	9-1/16	None	None	None	None
806-060FL	C60109	6	9-27/32	9-27/32	None	11-1/32	11-1/32	None	None	None	None
806-080FL	C80109	8	12-27/32	12-27/32	None	13-1/2	13-1/2	None	None	None	None

45° ELBOW
Flange x Flange



UNIV.#	PART#	SIZE	A	B	C	D	E	F	G	H	J
817-010FL	C10112	1	3-7/8	3-7/8	None	4-1/4	4-1/4	None	None	None	None
817-012FL	C14112	1-1/4	3-25/32	3-25/32	None	4-5/8	4-5/8	None	None	None	None
817-015FL	C17112	1-1/2	4-7/32	4-7/32	None	5	5	None	None	None	None
817-020FL	C20112	2	4-3/4	4-3/4	None	6	6	None	None	None	None
817-025FL	C27112	2-1/2	4-17/32	4-17/32	None	7	7	None	None	None	None
817-030FL	C30112	3	4-27/32	4-27/32	None	7-1/2	7-1/2	None	None	None	None
817-040FL	C40112	4	5-31/32	5-31/32	None	9-1/16	9-1/16	None	None	None	None
817-060FL	C60112	6	10-11/32	10-11/32	None	11-1/32	11-1/32	None	None	None	None
817-080FL	C80112	8	12-7/8	12-7/8	None	13-1/2	13-1/2	None	None	None	None

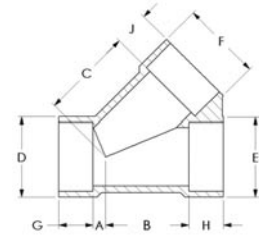
TEE
Flange x Flange x Flange



UNIV.#	PART#	SIZE	A	B	C	D	E	F	G	H	J
801-010FL	C10131	1	3-3/8	3-3/8	3-3/8	4-1/4	4-1/4	4-1/4	None	None	None
801-012FL	C14131	1-1/4	3-23/32	3-23/32	3-23/32	4-5/8	4-5/8	4-5/8	None	None	None
801-015FL	C17131	1-1/2	4-1/4	4-1/4	4-1/4	5	5	5	None	None	None
801-020FL	C20131	2	4-11/16	4-11/16	4-11/16	6	6	6	None	None	None
801-025FL	C27131	2-1/2	5-23/32	5-23/32	5-23/32	7	7	7	None	None	None
801-030FL	C30131	3	5-29/32	5-29/32	5-29/32	7-1/2	7-1/2	7-1/2	None	None	None
801-040FL	C40131	4	7-15/32	7-15/32	7-15/32	9-1/16	9-1/16	9-1/16	None	None	None
801-060FL	C60131	6	9-27/32	9-27/32	9-27/32	11-1/32	11-1/32	11-1/32	None	None	None
801-080FL	C80131	8	12-3/4	12-3/4	12-3/4	13-1/2	13-1/2	13-1/2	None	None	None

WYE*

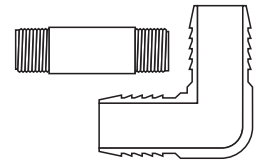
Soc x Soc x Soc



UNIV.#	PART#	SIZE	A	B	C	D	E	F	G	H	J
875-020	875-020	2	5/8	3-3/16	3-3/16	2-13/16	2-13/16	2-13/16	1-1/2	1-1/2	1-1/2
875-030	875-030	3	13/16	4-11/32	4-3/4	4-7/32	4-7/32	4-7/32	1-7/32	1-15/16	1-15/16
875-040	875-040	4	27/32	5-3/8	8-3/16	5-7/32	5-7/32	5-7/32	2-9/32	2-9/32	2-9/32
875-060	875-060	6	1-11/32	8-5/8	7-31/32	7-9/16	7-9/16	7-9/16	3-1/32	3-1/32	3-1/32
875-532	875-532	6x6x4	1-11/32	6-11/16	7	7-5/8	5-3/8	5-3/8	3	3	3

*Maximum system design pressure for WYE fittings at 73 degrees F:

2"	235 psi
3"	150 psi
4"	125 psi
6"	125 psi
6" x 6" x 4"	150 psi

**PVC INSERT FITTINGS
PVC AND CPVC THREADED PIPE NIPPLES**


Colonial Engineering also offers PVC Insert Fittings for use with flexible polyethylene pipe and Threaded Pipe Nipples in PVC and CPVC. See our list price sheets for more information.



PVC SCHEDULE 80 FITTINGS